

DELHI TRANSCO LTD.

STATE LOAD DISPATCH CENTER

PROGRESS REPORT

SEPTEMBER 2013

S. No.	CONTENTS	Page No.
1.	Salient Features of Delhi Power System	3
2.	Performance of Generating Stations within Delhi	4
3.	Details of Outage of Generating Stations within Delhi	5-18
4.	Allocation of Power to Delhi from unallocated quota of central sector	19-20
5.	Allocation of Power to Discoms	21-22
6.	Power Availability Demand Position of Delhi at the time of occurrence of Peak Demand	23
7.	Power Availability Demand Position of Delhi at the time of occurrence of Maximum Un-Restricted Demand	24
8.	Source wise scheduled drawl from grid and Availability within Delhi	25-27
9.	Shedding Details	28-31
10.	Load Curve for the Day of Peak Demand	32
11.	Load Curve for the day of occurrence of Maximum Un-Restricted Demand	33
12.	Load Curve for the day of Maximum Energy Consumed	34
13.	Load Curve for the day of Maximum Un-Restricted Energy Demand	35
14.	Load Duration Curve	36
15.	Frequency Analysis	37
16.	Voltage Profile for significant 220kV Sub-Stations	38
17.	Voltage Profile for significant 400kV Sub-Stations	39-40
18.	Details of Capacitors Installations in Delhi	41-46
19.	Tripping Details of 400/220 KV System in Delhi Power System	47-49
20.	Details of Under frequency Relay operations in Delhi Power System	50-51

SALIENT FEATURES OF DELHI POWER SYSTEM

Sr. No.	Features	SEPTEMBER 2012	SEPTEMBER 2013
1	Effective Generation Capacity within Delhi in MW		
	Rajghat Power House	135	135
	Gas Turbine	270	270
	Pragati Power Corporation Ltd.	330	330
	Badapur Thermal Power Station	705	705
	Rithala GT	108	108
	Bawana	685	685
	TOWMCL	16	16
	Total	2249	2249
2	Maximum Unrestricted Demand (MW)	4636	4803
	Date	13.09.12	11.09.13
	Time	15.02.12	22.59.59
3	Peak Demand met (MW)	4621	4803
	Date	13.09.12	11.09.13
	Time	15.02.12	22.59.59
4	Peak Availability (MW)	4594	4585
5	Shortage (-) / Surplus (+) in MW	(-) 27	(-)218
6	Percentage Shortage (-) / Surplus (+)	(-) 0.58	(-) 4.54
7	Maximum Energy Consume in a day (Mus)	92.023	95.984
8	Energy Consumed during the month	2408.793	2624.579
9	Load Shedding in Mus		
A)	Due to Grid Restrictions		
i)	Under Frequency Relay Operations	0.004	0.035
ii)	Manual Load shedding from DTL S/Stns.	0.000	0.000
iii)	Load Shedding due to low frequency / Low Voltage / TTC/ATC Violation		
	NDPL	0.182	0.465
	BRPL	0.414	0.317
	BYPL	0.118	0.249
	NDMC	0.000	0.000
	MES	0.000	0.000
iv)	Due to transmission Constraints in Central Sector	0.324	0.657
	Total due to Grid Restriction	1.042	1.723
B)	Due to Constraints in System in Mus		
	DTL	0.439	1.069
	NDPL	1.008	0.169
	BRPL	0.650	0.649
	BYPL	0.151	0.317
	NDMC	0.000	0.000
	MES	0.000	0.000
	Other Agencies	0.027	0.055
	Total	2.275	2.259
11	Grand Total in Mus	3.317	3.982

2. PERFORMANCE OF GENERATING STATIONS WITHIN DELHI DURING SEPTEMBER 2013

A) For the month of September 2013

All Figures in MUs

S. No	Stations	Gross Generation	Aux. Consumption	Net Generation	Availability (%)	Backing Down
1.	RPH	44.119	6.762	37.357	57.51	0.0986
2.	GT	90.082	2.852	87.230	89.33	81.369
3.	PPCL	199.404	5.352	194.052	91.74	17.973
4.	BTPS	342.549	33.522	309.026	94.00	110.674
5.	Rithala	0.000	0.128	-0.128	89.17	59.04
6.	Bawana	156.101	5.113	150.988	99.64	328.752
7.	Towmcl	9.204	1.477	7.727	--	0
	TOTAL	841.459	55.206	786.252	--	597.9066

B) For the Year 2013-14 (Upto Sept. 2013)

Power Station	Effective Capacity (MW)	Net Generation in MUs for Sept. 2013	Availability (%) for Sept. 2013	PLF (%) for Sept. 2013	Cumulative Generation in MUs upto Sept. 2013 for the year 2013-14	Cumulative Availability in % upto Sept. 2013 for the year 2013-14	Cumulative PLF in % upto Sept. 2013 for the year 2013-14
RPH	135	37.357	57.51	45.23	267.130	57.51	52.11
GT	270	87.230	89.33	46.18	571.782	88.64	56.05
PPCL	330	194.052	91.74	83.94	1171.720	90.38	83.12
BTPS	705	309.026	94.00	69.50	2077.003	96.43	74.87
Rithala	108	-0.128	89.17	0	-0.566	88.69	0.07
Bawana	685.6	150.988	99.64	18.20	596.030	87.03	16.40
Towmcl	16	7.727	--	--	44.180	--	--
TOTAL	2249	786.252	--	--	4727.279	--	--

3
(A)

**DETAILS OF OUTAGES OF GENERATING STNS. WITHIN DELHI W.E.F. APRIL 2012
RPH STATION**

Unit No	Capacity in MW	Outage		Synchronization		Reason of Outage
		Date	Time	Date	Time	
1	67.5	03.04.13	18.35	03.04.13	19.45	Unit tripped due to drum level very low.
		04.04.13	08.55	04.04.13	09.45	Unit tripped due to drum level low.
		14.04.13	10.20	14.04.13	15.40	Unit desynchronised to attend the CW line leakage.
		19.04.13	08.25	19.04.13	16.40	Unit desynchronised to attend the Boiler window repairing.
		19.04.13	17.00	19.04.13	17.30	Unit tripped due to bay no. 20 tripped.
		03.05.13	20.00	05.05.13	03.30	Unit desynchronised to attend the Boiler tube leakage.
		05.05.13	11.40	05.05.13	13.40	Unit tripped due to drum level low.
		05.05.13	15.55	05.05.13	20.15	Dark out due to Reactor on bay no. 9 had been blasted.
		19.05.13	07.10	24.05.13	04.40	Unit desynchronised due to shortage of coal fuel and to attend the CW line leakage.
		25.05.13	01.50	25.05.13	03.20	Unit tripped due to Furnace pr. very high.
		01.06.13	12.40	01.06.13	13.55	Unit tripped due to drum level low.
		02.06.13	11.55	02.06.13	13.05	Unit tripped due to Furnace pr. very high.
		06.06.13	17.10	06.06.13	20.05	Dark out due to 22K 9F, unit tripped.
		16.06.13	18.35	19.06.13	13.50	Unit desynchronised as per system operation.
		21.06.13	22.50	24.06.13	14.50	Unit desynchronised to attend the Boiler tube leakage.
		02.07.13	12.55	02.07.13	14.25	Dark out due to grid disturbance.
		09.07.13	23.30	10.07.13	00.25	Unit tripped due to flame failure.
		10.07.13	00.40	10.07.13	03.40	Unit tripped due to ST-1 trip.
		10.07.13	04.10	10.07.13	04.35	Unit tripped due to furnace pressure high.
		10.07.13	04.40	15.07.13	12.05	Unit tripped due to furnace pressure high (suspected boiler tube leakage).
		16.07.13	11.00	22.07.13	00.05	Unit tripped due to furnace pressure very high.
		22.07.13	03.55	22.07.13	04.25	
		22.07.13	10.45	22.07.13	12.00	Dark out due to 220kv supply failure.
		23.07.13	19.15	01.08.13	23.00	Unit tripped on furnace pressure very high due to boiler tube leakage.
		02.08.13	10.00	02.08.13	10.50	Unit tripped due to flame failure
		03.08.13	10.55	03.08.13	12.35	Dark out due to grid disturbance
		03.08.13	12.45	03.08.13	13.05	Unit tripped due to drum level low
		03.08.13	13.15	03.08.13	13.45	Unit tripped due to turbine trip
		07.08.13	19.35	07.08.13	20.55	Unit tripped due to flame failure
		07.08.13	21.05	07.08.13	22.25	Unit tripped due to drum level very low
		08.08.13	08.05	16.08.13	17.40	Stopped due to low demand and high frequency
		21.08.13	06.55	21.08.13	08.35	Unit tripped due to turbine trip
		22.08.13	02.15	22.08.13	03.00	Unit tripped on furnace pressure very high
		22.08.13	22.00	27.08.13	17.40	Unit tripped due to heavy steam leakage from turbine control valve
11.09.13	03.23	12.09.13	15.15	Shortage of raw water		
16.09.13	05.05	16.09.13	12.19	Coal mill problem		
22.09.13	05.58	24.09.13	14.00	Stopped due to low demand and high frequency		
27.09.13	23.00	27.09.13	23.30	Furnance pressure high		
28.09.13	17.00	28.09.13	18.00	Flame failure		

Unit No	Capacity in MW	Outage		Synchronization		Reason of Outage
		Date	Time	Date	Time	
2	67.5	03.04.13	04.10	03.04.13	05.35	Unit tripped due to turbine trip.
		05.04.13	20.00	06.04.13	04.05	Unit desynchronised to attend the economiser tube leakage.
		14.04.13	10.10	14.04.13	18.15	Unit desynchronised to attend the CW line leakage.
		04.05.13	09.20	06.05.13	03.25	Unit desynchronised to attend the Economiser tube leakage.
		11.05.13	17.15	11.05.13	18.00	Unit tripped due to turbine trip.
		11.05.13	23.20	11.05.13	23.45	
		19.05.13	07.15	19.05.13	20.55	Unit desynchronised to attend the CW line leakage.
		24.05.13	05.50	01.06.13	00.25	Unit desynchronised due to shortage of coal fuel.
		01.06.13	19.20	07.06.13	14.20	Unit tripped due to Boiler tube leakage.
		11.06.13	07.15	11.06.13	08.30	Unit tripped due to birdage, bay No. 1 to 9 tripped.
		18.06.13	14.20	18.06.13	15.00	Unit tripped due to turbine trip.
		02.07.13	12.55	02.07.13	14.10	Dark out due to grid disturbance.
		02.07.13	23.55	03.07.13	00.55	Unit tripped due to loss of fuel.
		10.07.13	00.45	10.07.13	02.00	Unit tripped due to emergency board supply failure.
		10.07.13	10.45	10.07.13	11.55	Unit tripped due to furnace pressure very high.
		10.07.13	13.50	10.07.13	17.10	Unit desynchronised due to furnace pressure hunting.
		11.07.13	09.20	12.07.13	19.25	Unit desynchronised, furnace disturbance due to wet coal.
		14.07.13	15.35	14.07.13	16.10	Unit tripped due to furnace pressure very high.
		15.07.13	03.45	15.07.13	04.45	Unit tripped due to furnace pressure high.
		19.07.13	07.50	19.07.13	08.20	Unit tripped due to condensor vacuum low.
		21.07.13	03.55	23.07.13	22.20	Unit desynchronised due to no coal flow.
		24.07.13	17.40	02.08.13	13.20	Unit desynchronised to attend the leakage from ACW line.
		03.08.13	10.55	03.08.13	12.10	Dark out due to grid disturbance
		16.08.13	19.30	23.08.13	22.20	Stopped due to low demand and high frequency
		26.08.13	12.15	26.08.13	13.20	Dark out due to grid disturbance
		28.08.13	22.15	13.09.13	16.23	Unit desynchronised to attend the boiler tube leakage / coal mill problem
26.09.13	09.55	30.09.13	23.59	Boiler tube leakage		

(B) Gas Turbine

Unit No	Capacity in MW	Outage		Synchronization		Reason of Outage
		Date	Time	Date	Time	
1	30	01.04.13	0:00	01-04-13	5:45	Stopped due to low demand and high frequency
		03.04.13	16:30	10-04-13	11:25	
		18.04.13	23:20	19-04-13	12:01	Machine stopped to rectify the faulty Controller
		19.04.13	12:15	22-04-13	5:47	Stopped due to low demand and high frequency
		29.04.13	11:31	29-04-13	23:37	
		07.05.13	1:45	13-05-13	14:25	
		13.05.13	16:48	13-05-13	17:10	Machine came on FSNL during charging of 160 MVA Trf.
		18.05.13	13:25	21-05-13	21:10	Stopped due to low demand and high frequency
		30.05.13	21:45	17-06-13	22:55	
		17.06.13	23:15	18-06-13	20:15	
		28.06.13	10:52	28-06-13	22:00	
		28.06.13	22:00	29-06-13	17:00	Machine not available due to problem in Diesel Engine
		29.06.13	17:00	01-07-13	18:05	Stopped due to low demand and high frequency
		01.07.13	21:35	02-07-13	17:45	
		02.07.13	17:45	03-07-13	11:45	Machine could not be started due to problem in EOP
		03.07.13	11:45	08-07-13	8:55	Stopped due to low demand and high frequency
		12.07.13	11:50	15-07-13	8:00	
		15.07.13	9:10	15-07-13	10:40	
		17.07.13	11:20	18-07-13	20:35	
		20.07.13	12:05	27-07-13	21:30	
		27-07-13	21:40	28-07-13	0:12	Machine could not be synchronised due to ignition pressure high trip.
		29-07-13	13:55	29-07-13	15:10	Machine tripped due to GCV reference not followed and loss of flame
		31-07-13	10:40	31-07-13	11:27	Machine came on FSNL due to grid disturbance
		31-07-13	17:30	01.08.13	23:42	Stopped due to low demand and high frequency
		02.08.13	1:40	02.08.13	11:45	
		02.08.13	12:40	04.08.13	10:41	
		06.08.13	15:30	08.08.13	20:41	
		09.08.13	1:20	28.08.13	0:30	
		28.08.13	0:30	28.08.13	3:00	Machine taken out from DC due to leakage in ACW line.
		28.08.13	3:00	28.08.13	11:45	Stopped due to low demand and high frequency
		28.08.13	11:45	28.08.13	14:00	due to leakage in ACW line,GT# 1 not available
		28.08.13	14:00	05.09.13	10:53	
		06.09.13	02:17	12.09.13	21:27	Stopped due to low demand and high frequency
13.09.13	18:18	30.09.13	23:59			

Unit No	Capacity in MW	Outage		Synchronization		Reason of Outage
		Date	Time	Date	Time	
2	30	01-04-13	0:00	01-04-13	5:35	Stopped due to low demand and high frequency
		03-04-13	12:02	09-04-13	5:50	
		10-04-13	17:25	11-04-13	11:45	
		28-04-13	21:40	28-04-13	23:45	
		07-05-13	16:30	13-05-13	17:20	
		17-05-13	16:20	28-06-13	22:00	
		28-06-13	22:00	29-06-13	17:00	Machine not available due to problem in Gas Valve
		29-06-13	17:00	02-07-13	17:45	Stopped due to low demand and high frequency
		02-07-13	17:45	03-07-13	13:15	Machine could not be started due to problem in EOP
		03-07-13	13:15	28.08.13	0:30	Stopped due to low demand and high frequency
		28.08.13	0:30	28.08.13	3:00	Machine taken out from DC due to leakage in ACW line.
		28.08.13	3:00	28.08.13	11:45	Stopped due to low demand and high frequency
		28.08.13	11:45	28.08.13	14:00	due to leakage in ACW line,GT# 2 not available
		28.08.13	14:00	30.09.13	23:59	Stopped due to low demand and high frequency

Unit No	Capacity in MW	Outage		Synchronization		Reason of Outage
		Date	Time	Date	Time	
3	30	01-04-13	0:00	01-04-13	7:30	Stopped due to low demand and high frequency
		17-04-13	10:40	22-04-13	8:10	
		28-04-13	21:46	29-04-13	10:55	
		04-05-13	0:05	06-05-13	14:00	
		07-05-13	1:50	07-05-13	12:00	
		11-05-13	19:30	14-05-13	17:15	
		14-05-13	18:23	14-05-13	21:00	
		14-05-13	21:00	17-05-13	15:45	
		06-06-13	17:04	06-06-13	19:00	Machine came on FSNL due to tripping of 160 MVA Tr-I & II at IP Extension end.
		06-06-13	22:47	07-06-13	11:55	Stopped due to low demand and high frequency
		09-06-13	8:09	09-06-13	9:50	Machine came on FSNL due to tripping of 160 MVA Tr-I & II Buchholtz relay operated after that tripped on Lube oil temperature high as the auxiliary supply failed .
		11-06-13	12:45	12-06-13	7:56	Stopped due to low demand and high frequency
		14-06-13	8:45	17-06-13	20:50	
		23-06-13	23:40	24-06-13	8:16	
		28-06-13	9:40	28-06-13	21:13	
		30-06-13	9:18	01-07-13	17:23	
		02-07-13	12:44	02-07-13	13:40	
		12-07-13	14:25	12-07-13	21:30	Stopped due to low demand and high frequency
		11-07-13	11:30	18-07-13	20:40	
		20-07-13	12:06	20-07-13	13:22	
		22-07-13	10:32	22-07-13	10:46	
		22-07-13	11:20	22-07-13	12:55	Machine taken on FSNL due to voltage problem,160 MVA Tx. Not synchronised
		27-07-13	11:05	27-07-13	21:45	Stopped due to low demand and high frequency
		28-07-13	20:05	30-07-13	20:53	
		31-07-13	10:40	31-07-13	15:55	Machine tripped due to grid disturbance
		03.08.13	10:56	03.08.13	11:23	Machine came on FSNL due to grid disturbance
		03.08.13	11:23	05.08.13	19:30	Stopped due to low demand and high frequency
		06.08.13	15:34	07.08.13	15:40	
		09.08.13	22:15	26.08.13	9:15	
		26.08.13	12:12	26.08.13	12:58	machine tripped due to Grid disturbance
		28.08.13	0:30	28.08.13	2:50	due to leakage in ACW line,GT not available
		08.09.13	12:32	11.09.13	11:55	Stopped due to low demand and high frequency
		12.09.13	12:45	12.09.13	15:06	
13.09.13	09:15	13.09.13	17:05			
21.09.13	14:46	24.09.13	08:48			

Unit No	Capacity in MW	Outage		Synchronization		Reason of Outage
		Date	Time	Date	Time	
4	30	01-04-13	0:00	03-04-13	15:50	Stopped due to low demand and high frequency
		17-04-13	10:40	27-04-13	3:15	
		04-05-13	0:02	06-05-13	14:13	
		07-05-13	13:20	07-05-13	15:55	
		11-05-13	19:32	14-05-13	9:58	
		21-05-13	13:10	21-05-13	17:10	
		30-05-13	3:05	05-06-13	11:58	
		06-06-13	17:04	06-06-13	17:15	Machine came on FSNL due to tripping of 160 MVA Tr-I & II at IP Extension end.
		09-06-13	8:09	09-06-13	9:40	Machine came on FSNL due to tripping of 160 MVA Tr-I & II Buchholtz relay operated after that tripped on Lube oil temperature high as the auxiliary supply failed .
		11-06-13	12:45	12-06-13	7:54	Stopped due to low demand and high frequency
		14-06-13	10:20	17-06-13	23:59	
		18-06-13	0:00	19-06-13	21:45	machine not available due to non availability of 66 KV breaker.
		19-06-13	21:45	21-06-13	9:22	Machine not taken on bar due to less schedule from SLDC.
		24-06-13	14:46	24-06-13	15:30	Stopped due to low demand and high frequency
		28-06-13	9:30	28-06-13	22:00	
		28-06-13	22:00	29-06-13	12:10	machine not available due to non availability of AC AOP
		02-07-13	12:44	02-07-13	13:05	Machine came on FSNL due to grid disturbance
		17-07-13	11:30	18-07-13	23:27	Stopped due to low demand and high frequency
		22-07-13	10:32	22-07-13	11:02	Machine came on FSNL due to grid disturbance
		24-07-13	10:10	01.08.13	22:55	Stopped due to low demand and high frequency
		03.08.13	10:56	03.08.13	11:58	Machine came on FSNL due to grid disturbance
		04.08.13	12:50	05.08.13	20:05	Stopped due to low demand and high frequency
		10.08.13	13:32	26.08.13	9:10	
		26.08.13	12:12	26.08.13	13:05	Machine came on FSNL due to grid disturbance
		28.08.13	0:32	28.08.13	3:00	due to leakage in ACW line,GT not available
		28.08.13	3:00	28.08.13	5:12	Stopped due to low demand and high frequency
		08.09.13	12:34	11.09.13	11:56	
		12.09.13	12:45	12.09.13	15:05	
		15.09.13	12:37	15.09.13	20:02	
		17.09.13	21:30	19.09.13	09:27	
		21.09.13	14:48	24.09.13	07:40	

Unit No	Capacity in MW	Outage		Synchronization		Reason of Outage
		Date	Time	Date	Time	
5	30	28-04-13	9:34	06-05-13	13:25	Stopped due to low demand and high frequency
		13-05-13	16:48	14-05-13	9:27	
		14-05-13	9:47	18-05-13	10:56	
		24-05-13	18:52	25-05-13	9:55	Tripped due to R-communication link failure alarm & master protective alarm appeared.
		06-06-13	17:04	06-06-13	17:48	Machine came on FSN1 due to tripping of 160 MVA Tr-I & II at IP Extension end.
		09-06-13	8:09	09-06-13	8:54	Machine came on FSNL due to tripping of 160 MVA Tr-I & II Buchholtz relay operated after that tripped on Lube oil temperature high as the auxiliary supply failed .
		09-06-13	8:54	10-06-13	7:47	Machine not taken on load due to low schedule from SLDC
		17-06-13	12:17	17-06-13	14:00	Machine tripped on Bus under Voltage alarm as 66 KV bus became dead due to tripping of 160 MVA Tx-I & II .
		18-06-13	13:53	18-06-13	15:45	Machine tripped at IGV Control trouble and Fire Protection Alarm.
		02-07-13	12:44	02-07-13	13:08	Machine came on FSNL due to grid disturbance
		06-07-13	10:55	08-07-13	9:15	Stopped due to low demand and high frequency
		08-07-13	11:32	11-07-13	23:00	
		11-07-13	23:00	12-07-13	10:29	Machine could not be synchronised due to Overall diff. opearted problem
		12-07-13	20:42	15-07-13	8:55	Stopped due to low demand and high frequency
		16-07-13	8:29	16-07-13	9:55	Machine tripped on electrical trouble normal shut down (Due to MVR problem)
		17-07-13	3:00	17-07-13	5:00	
		20-07-13	13:33	23-07-13	21:15	Stopped due to low demand and high frequency
		31-07-13	10:40	31-07-13	10:50	Machine came on FSNL due to grid disturbance
		03.08.13	10:56	03.08.13	11:10	Machine came on FSNL due to grid disturbance
		07.08.13	14:45	08.08.13	21:05	Stopped due to low demand and high frequency
		26.07.13	12:12	26.08.13	12:38	Machine came on FSNL due to grid disturbance
		26.08.13	20:00	27.08.13	11:10	Stopped due to low demand and high frequency
		28.08.13	0:25	28.08.13	2:55	due to leakage in ACW line,GT not available
30.08.13	22:15	04.09.13	15:00	Stopped due to low demand and high frequency		

Unit No	Capacity in MW	Outage		Synchronization		Reason of Outage
		Date	Time	Date	Time	
6	30	10-04-13	12:45	10-04-13	16:30	Stopped due to low demand and high frequency
		21-04-13	12:42	22-04-13	10:15	
		28-04-13	9:32	30-04-13	0:40	
		13-05-13	13:00	13-05-13	16:48	Tripped due to heavy jerk observed in control room.
		13-05-13	16:48	14-05-13	10:38	Stopped due to low demand and high frequency
		14-05-13	18:00	21-05-13	11:05	
		29-05-13	10:42	29-05-13	12:30	Oil temp gauge which is mounted on T/F was founded tilted by at least 30 which leads to maloperation of mercury switch and relay 26 TP-I & 26TP-II operated causing the machine tripped on Electrical trouble normal shutdown
		06-06-13	17:04	06-06-13	17:52	Machine came on FSNL due to tripping of 160 MVA Tr-I & II at IP Extension end.
		06-06-13	22:50	07-06-13	12:04	Stopped due to low demand and high frequency
		09-06-13	8:09	09-06-13	8:54	Machine came on FSNL due to tripping of 160 MVA Tr-I & II Buchholtz relay operated after that tripped on Lube oil temperature high as the auxiliary supply failed .
		09-06-13	8:54	10-06-13	7:52	Machine not taken on load due to low schedule from SLDC
		14-06-13	8:50	14-06-13	10:05	Stopped due to low demand and high frequency
		17-06-13	12:17	17-06-13	17:10	Machine tripped on Reverse Power relay operated as 66 KV bus become dead due to tripping of 160 MVA transformer I & II.
		30-06-13	9:07	01-07-13	17:25	Stopped due to low demand and high frequency
		02-07-13	12:44	02-07-13	13:10	Machine came on FSNL due to grid disturbance
		06-07-13	10:50	08-07-13	9:01	Stopped due to low demand and high frequency
		08-07-13	11:37	11-07-13	19:50	
		12-07-13	14:25	15-07-13	6:24	
		20-07-13	13:30	24-07-13	9:25	
		31-07-13	10:40	31-07-13	11:36	
		03.08.13	10:56	03.08.13	11:15	Machine came on FSNL due to grid disturbance
		07.08.13	16:30	08.08.13	20:47	Stopped due to low demand and high frequency
		09.08.13	22:15	10.08.13	12:30	
		26.08.13	12:12	26.08.13	12:18	Machine came on FSNL due to grid disturbance
		26.08.13	19:20	27.08.13	11:45	Stopped due to low demand and high frequency
		28.08.13	0:26	28.08.13	0:30	due to leakage in ACW line,GT not available
		28.08.13	0:30	28.08.13	11:45	Stopped due to low demand and high frequency
		28.08.13	11:45	28.08.13	14:00	Machine not available due to Gas Valve leakage
		28.08.13	14:00	04.09.13	15:15	Stopped due to low demand and high frequency
		17.09.13	21:31	19.09.13	09:30	

Unit No	Capacity in MW	Outage		Synchronization		Reason of Outage	
		Date	Time	Date	Time		
STG-1	30	01-04-13	0:00	01-04-13	9:15	Stopped due to low demand and high frequency	
		01-04-13	9:30	01-04-13	11:10	Machine stopped due to inspection of high Vibration	
		03-04-13	16:30	09-04-13	8:25	Stopped due to low demand and high frequency	
		29-04-13	11:31	30-04-13	2:05		
		07-05-13	16:30	13-05-13	19:15		
		18-05-13	13:25	22-05-13	0:10		
		30-05-13	21:45	18-06-13	23:54		
		28-06-13	10:52	28-06-13	22:00		
		28-06-13	22:00	29-06-13	17:00		Machine not available due to Non availability of GTs
		29-06-13	17:00	01-07-13	21:00		Stopped due to low demand and high frequency
		01-07-13	21:00	01-07-13	23:59	Machine not available due to problem in both BFPs.	
		02-07-13	0:00	02-07-13	17:45	Stopped due to low demand and high frequency	
		02-07-13	17:45	03-07-13	11:45	Macine not available due to non availability of GTs.	
		03-07-13	13:15	08-07-13	10:15	Stopped due to low demand and high frequency	
		12-07-13	11:50	15-07-13	13:00		
		17-07-13	11:25	18-07-13	23:15		
		20-07-13	12:10	27-07-13	21:30		
		27-07-13	21:30	28-07-13	0:12		
		28-07-13	0:12	28-07-13	1:55		
		29-07-13	13:55	29-07-13	16:00		Tripped due to tripping of GT#1
		31-07-13	10:40	31-07-13	13:55		Machine tripped due to grid disturbance
		31-07-13	17:30	02.08.13	13:15	Stopped due to low demand and high frequency	
		02.08.13	13:15	02.08.13	18:15	Due to oil leakage from Turbine side machine taken under shut down by M-II	
		02.08.13	18:15	04.08.13	12:45		
		06.08.13	15:29	08.08.13	22:40	Stopped due to low demand and high frequency	
		09.08.13	1:20	25.08.13	23:59	Machine not available due to Non availability of GT#1 and 2	
		28.08.13	0:30	28.08.13	3:00		
		28.08.13	3:00	28.08.13	11:45	Stopped due to low demand and high frequency	
		28.08.13	11:45	28.08.13	14:10	due to leakage in ACW line,GT# 1 and 2 not available	
		28.08.13	14:00	05.09.13	15:45	Stopped due to low demand and high frequency	
06.09.13	02:13	12.09.13	22:30				
13.09.13	18:18	30.09.13	23:59				

Unit No	Capacity in MW	Outage		Synchronization		Reason of Outage
		Date	Time	Date	Time	
STG-2	30	01-04-13	0:00	01-04-13	11:25	Stopped due to low demand and high frequency
		16-04-13	10:40	22-04-13	11:45	
		23-04-13	12:14	23-04-13	13:09	Machine tripped due to malfunctioning of MS-14 Valve
		27-04-13	5:30	27-04-13	6:15	Machine tripped in the jerk.
		28-04-13	21:46	29-04-13	11:30	Stopped due to low demand and high frequency
		04-05-13	0:02	06-05-13	17:05	
		11-05-13	19:30	14-05-13	13:57	
		19-05-13	1:25	19-05-13	3:05	Machine Tripped on Exhaust pressure high.
		05-06-13	1:01	05-06-13	2:21	Tripped due to sudden drop in vacuum without appearing alarm in annunciation pannel.
		06-06-13	17:04	06-06-13	18:55	Machine tripped as the GT#3 & 4 came on FSNL due to tripping of 160 MVA Tx-I & II at IP Extn end.
		09-06-13	8:09	09-06-13	11:52	Machine tripped as corresponding GT came on FSNL due to tripping of 160 MVA Tr-I & II on Buchholtz relay operated .
		10-06-13	11:42	10-06-13	12:50	Machine stopped to attend
		11-06-13	12:45	12-06-13	10:35	Stopped due to low demand and high frequency
		14-06-13	8:45	17-06-13	23:45	
		23-06-13	21:35	23-06-13	23:20	Machine tripped on LLVT tank v. High Alarm
		28-06-13	9:40	28-06-13	23:15	Stopped due to low demand and high frequency
		02-07-13	12:44	02-07-13	14:25	Machine tripped due to grid disturbance.
		17-07-13	11:35	18-07-13	23:20	Stopped due to low demand and high frequency
		22-07-13	9:35	22-07-13	12:40	Machine tripped due to grid disturbance.
		27-07-13	11:07	27-07-13	23:15	Stopped due to low demand and high frequency
		28-07-13	20:07	31-07-13	3:00	
		31-07-13	10:40	31-07-13	17:24	Machine tripped due to grid disturbance.
		03.08.13	10:56	03.08.13	13:07	machine tripped due to Grid disturbance
		04.08.13	12:50	05.08.13	21:35	
		10.08.13	13:32	26.08.13	18:39	Stopped due to low demand and high frequency
		28.08.13	0:32	28.08.13	3:00	Machine not available due to Non availability of GT#3 and 4
		28.08.13	3:00	28.08.13	4:45	
		8.9.13	12:37	11.9.13	14:15	
		13.9.13	09:15	13.9.13	11:13	Stopped due to low demand and high frequency
		21.9.13	14:48	24.9.13	10:20	

Unit No	Capacity in MW	Outage		Synchronization		Reason of Outage
		Date	Time	Date	Time	
STG-3	30	05-04-13	17:05	05-04-13	18:20	Machine stopped manually to attend oil Leakage from Secondary oil Pressure line
		28-04-13	9:34	30-04-13	4:25	Stopped due to low demand and high frequency
		03-05-13	17:41	03-05-13	19:04	Machine stopped due to problem in drum level indication and level problem.
		13-05-13	13:00	13-05-13	16:48	Tripped due to heavy jerk observed in control room.
		13-05-13	16:48	14-05-13	13:50	Stopped due to low demand and high frequency
		14-05-13	18:00	18-05-13	13:05	
		03-06-13	9:22	03-06-13	10:07	Machine tripped on Hot well very high alarm as the Control valve CD-34 left the auto and closed. Another Stream CD-37 tried to be taken into service, in the mean time machine tripped on hot well high alarm.
		06-06-13	17:04	06-06-13	18:30	Machine tripped as the GT#5 & 6 came on FSNL due to tripping of 160 MVA Tx-I & II at IP Extn end.
		09-06-13	8:09	09-06-13	8:54	Machine tripped as corresponding GT came on FSNL due to tripping of 160 MVA Tr-I & II on Buchholtz relay operated .
		09-06-13	8:54	10-06-13	10:14	Machine not taken on load due to low schedule from SLDC
		15-06-13	1:58	15-06-13	2:58	Tripped due to LLVT tank level high.
		17-06-13	12:17	17-06-13	15:12	Machine tripped due to both GTs tripped due to Tripping of 160 MVA Tx.
		02-07-13	12:44	02-07-13	14:35	Machine tripped due to grid disturbance.
		06-07-13	10:55	08-07-13	10:15	Stopped due to low demand and high frequency
		08-07-13	10:15	11-07-13	23:07	Machine stopped to attend oil leakage from Oil catcher.
		12-07-13	20:42	15-07-13	8:40	Stopped due to low demand and high frequency
		20-07-13	12:37	20-07-13	13:33	Machine tripped manually due to sticking of MS-14 valve and not opearting of MS-11 and MS-13 valve.
		20-07-13	13:33	24-07-13	2:05	Stopped due to low demand and high frequency
		31-07-13	10:40	31-07-13	12:27	Machine tripped due to grid disturbance.
		03.08.13	10:56	03.08.13	12:02	Machine tripped due to Grid disturbance
		07.08.13	16:32	09.08.13	1:12	Stopped due to low demand and high frequency
		17.08.13	11:48	17.08.13	12:45	All the parameters of Turbovisiory and Electronic governor disappeared resulting tripping of steam turbine.
		26.08.13	12:12	26.08.13	13:57	Machine tripped due to Grid disturbance
		26.08.13	18:24	27.08.13	13:48	Stopped due to low demand and high frequency
		28.08.13	0:30	28.08.13	3:00	Machine not available due to Non availability of GT#5 and 6
		28.08.13	3:00	28.08.13	6:30	
		30.08.13	22:18	04.09.13	18:00	Stopped due to low demand and high frequency

(C) PRAGATI STATION

Unit No	Capacity in MW	Outage		Synchronization		Reason of Outage
		Date	Time	Date	Time	
1	104	23.05.13	14.29	23.05.13	14.56	Tripped due to Gas Fuel Pr. Low by GAIL
		15.06.13	21.55	17.06.13	9.00	No schedule to run GT#1 on Open Cycle.
		17.06.13	9.00	24.06.13	0.26	Tripped on internal fault
		25.06.13	22.00	26.06.13	2.00	
		26.06.13	2.00	26.06.13	13.42	No schedule of GT#1 in OC due to low demand, HRSG#1 not available- FW104 stuck
		09.07.13	19.03	09.07.13	19.50	Tripped on internal fault
		22.07.13	10.43	22.07.13	12.26	Tripped due to Grid Distrubance
		23.07.13	16.28	23.07.13	19.29	Tripped on internal fault
		03.09.13	13.10	03.09.13	14.14	
		28.09.13	06.01	29.09.13	16.30	Stopped to attend generation winding temprature.

Unit No	Capacity in MW	Outage		Synchronization		Reason of Outage
		Date	Time	Date	Time	
2	104	21.04.13	8.15	21.04.13	18.15	Stopped by DTL to attend hot spot.
		21.04.13	18.15	23.04.13	6.31	Tripped on internal fault
		26.04.13	6.45	26.04.13	8.37	
		14.05.13	13.28	14.05.13	14.13	
		06.06.13	17.10	06.06.13	18.05	Tripped due to Grid Disturbance
		01.07.13	16.02	01.07.13	17.40	Tripped on internal fault
		02.07.13	12.54	02.07.13	13.55	Tripped due to Grid Disturbance
		08.07.13	11.37	08.07.13	12.48	Tripped on internal fault
		22.07.13	10.43	22.07.13	11.52	Tripped due to Grid Disturbance
		03.08.13	10.57	03.08.13	11.08	Tripped due to Grid Disturbance
		15.08.13	10.48	16.08.13	16.31	Stopped due to low demand and high frequency
		26.08.13	12.15	26.08.13	12.26	Tripped due to Grid Disturbance
		28.08.13	6.07	29.08.13	8.53	Stopped due to low demand and high frequency
		29.08.13	20.40	29.08.13	22.30	Tripped on internal fault
24.09.13	02.34	24.09.13	09.44	Tripped due to grid disturbance		

Unit No	Capacity in MW	Outage		Synchronization		Reason of Outage
		Date	Time	Date	Time	
STG	122	17.04.13	18.37	17.04.13	19.52	Tripped on internal fault
		21.04.13	11.44	21.04.13	14.15	
		21.04.13	14.15	21.04.13	18.36	Shut down continued by DTL to attend hot spot.
		06.06.13	17.10	06.06.13	18.50	Tripped due to Grid Disturbance
		02.07.13	12.54	02.07.13	15.02	
		09.07.13	19.03	09.07.13	20.15	Tripped on internal fault
		22.07.13	10.43	22.07.13	15.53	Tripped due to Grid Disturbance
		23.07.13	16.28	23.07.13	17.42	Tripped on internal fault
		03.08.13	10.57	03.08.13	11.47	Tripped due to Grid Disturbance
		26.08.13	12.15	26.08.13	13.35	Tripped due to Grid Disturbance
		29.08.13	20.45	29.08.13	22.52	Tripped on internal fault
		03.09.13	13.18	03.09.13	14.25	
		10.09.13	00.34	10.09.13	01.32	

(D) **BADARPUR THERMAL POWER STATION**

Unit	Capacity in MW	Outage		Synchronization		Reason of Outage
		Date	Time	Date	Time	
1	95	01.04.13	0:00	01.04.13	19:18	Reserve Shutdown
		12.05.13	18:18	12.05.13	21:20	Grid Disturbance
		04.06.13	22:45	05.06.13	23:45	Water Wall tube leakage
		13.06.13	10:58	13.06.13	11:32	Furnace Disturbance
		16.06.13	18:38	21.06.13	14:14	Reserve Shutdown
		09.07.13	20:41	15.07.13	2400	
		19.07.13	3:28	20.07.13	18:14	
		26.07.13	14:36	29.07.13	16:00	Furnace Disturbance
		10.08.13	15:12	10.08.13	16:00	
		10.08.13	17:11	10.08.13	23:15	Stopped due to low demand and high frequency
		10.08.13	23:15	14.09.13	21.06	
		17.09.13	03:13	17.09.13	04:06	
		22.09.13	14:00	22.09.13	15:08	Furnace Disturbance
		22.09.13	23:52	23.09.13	01:00	
		23.09.13	01:00	23.09.13	21:00	
23.09.13	21:00	30.09.13	23.59	Platen Superheater leakage		
				Stopped due to low demand and high frequency		

Unit	Capacity in MW	Outage		Synchronization		Reason of Outage
		Date	Time	Date	Time	
2	95	12.05.13	18:18	12.05.13	20:07	Grid Disturbance
		28.06.13	10:32	28.07.13	9:56	Reserve Shutdown
		08.08.13	11:01	10.08.13	22:09	
		23.08.13	13:14	23.08.13	14:15	Furnace Disturbance
		21.09.13	19:57	23.09.13	19:49	Stopped due to low demand and high frequency

Unit	Capacity in MW	Outage		Synchronization		Reason of Outage
		Date	Time	Date	Time	
3	95	03.04.13	19:55	22.04.13	13:40	Planned Shutdown
		12.05.13	18:18	12.05.13	20:20	Grid Disturbance
		26.05.13	12:41	27.05.13	12:58	Economiser Tube leakage
		13.06.13	10:40	18.06.13	12:04	Reserve Shutdown
		04.07.13	5:45	04.07.13	7:06	Furnace Disturbance
		18.07.13	11:39	19.07.13	2:48	Reserve Shutdown
		01.08.13	21:28	02.08.13	13:43	Water Wall tube leakage
		03.08.13	3:45	03.08.13	6:14	Furnace Disturbance
		03.08.13	17:10	03.08.13	18:02	
		06.08.13	11:15	06.08.13	11:56	Furnace Disturbance
		07.08.13	11:40	15.09.13	07:21	Reserve Shutdown
		19.09.13	05:19	19.09.13	06:50	Furnace Disturbance
		19.09.13	21:01	19.09.13	21:42	
		28.09.13	10:05	28.09.13	19:22	

Unit	Capacity in MW	Outage		Synchronization		Reason of Outage
		Date	Time	Date	Time	
4	210	09.04.13	22:17	10.04.13	2:07	MDBFP relay malfunction
		12.05.13	18:18	12.05.13	21:35	Grid Disturbance
		25.05.13	7:28	23.05.13	15:34	UAT 4A diff relay casing shorted
		11.06.13	15:35	13.06.13	7:48	Reserve Shutdown
		10.08.13	10:24	10.08.13	13:40	AVR & EXCITATION SYSTEM
		14.09.13	04:34	15.09.13	23:01	Water Wall tube leakage

Unit	Capacity in MW	Outage		Synchronization		Reason of Outage
		Date	Time	Date	Time	
5	210	09.05.13	0:06	09.05.13	15:57	APH 5B NDE Bearing vibration high
		11.05.13	19:48	14.05.13	12:17	Reserve Shutdown
		16.06.13	15:58	16.06.13	17:09	CW Shortage
		24.06.13	16:23	24.06.13	17:45	Furnace Disturbance
		24.06.13	18:04	24.06.13	19:03	
		27.06.13	14:20	27.06.13	18:31	AVR & Excitation System
		04.07.13	0:12	04.07.13	1:15	Furnace Disturbance
		27.07.13	19:16	30.07.13	1:24	Steam Cooled W/Wall leakage
		01.08.13	20:43	02.08.13	18:30	Drum manhole leakage
		14.08.13	19:00	15.08.13	10:15	Water Wall tube leakage
		15.08.13	10:15	16.08.13	7:13	Reserve S/D
		04.09.13	13:23	06.09.13	09:11	Water Wall tube leakage
		06.09.13	13:39	07.09.13	21:32	Economiser Tube leakage

(E) BAWANA CCGT POWER STATION

Unit	Capacity in MW	Outage		Synchronization		Reason of Outage
		Date	Time	Date	Time	
1	216	01.04.13	00:00	01.04.13	8:39	Combustion inspection
		05.04.13	10:55	21.04.13	23:59	M/C under planned shut down due to CW interconnection/CW sump cleaning/Diverter Damper setting
		19.06.13	00:26	19.06.13	02:42	G.T. -1 tripped due to Hot gas temp high.
		20.06.13	20:42	05.08.13	09:10	Stopped due to low demand and high frequency
		19.08.13	14:27	26.08.13	11:54	Stopped due to low demand and high frequency
		25.09.13	12:05	Contd.		

Unit	Capacity in MW	Outage		Synchronization		Reason of Outage
		Date	Time	Date	Time	
2	216	05.04.13	13:13	12.04.13	19:02	M/C under planned shut down due to CW interconnection/CW sump cleaning/Diverter Damper setting up to 12.04.13
		14.04.13	13:40	25.04.13	08:57	Stopped due to low demand and high frequency
		29.04.13	22:25	30.04.13	06:25	M/C Stopped due to gas leakage in pipe line
		07.05.13	20:38	08.05.13	0:26	CW Pump Motor Failure
		29.05.13	13:57	29.05.13	15:30	GT#2 tripped on EPB press by default
		03.06.13	10:54	03.06.13	13:53	GT #2 tripped due to its rotor earth fault
		06.06.13	22:50	10.06.13	12:38	Stopped due to low demand and high frequency
		13.06.13	08:14	20.06.13	18:33	Stopped due to low demand and high frequency
		21.06.13	08:21	21.06.13	12:54	GT #2 tripped due to difference in G-1 feedback
		30.06.13	14:16	30.06.13	14:58	GT#2 Tripped on Excitation tripping
		12.07.13	15:00	Contd.		Stopped due to low demand and high frequency

Unit	Capacity in MW	Outage		Synchronization		Reason of Outage
		Date	Time	Date	Time	
STG	254	01.04.13	0:00	27.04.13	19:19	M/C under planned shut down due to CW interconnection/CW sump cleaning/Diverter Damper setting up to 12.04.13 after force shutdown due to bearing failure of turbine up to 25.04.13 and 25.04.13 to 27.04.13 due to generator IR value low
		29.04.13	22:25	30.04.13	6:25	M/C Stopped due to gas leakage in pipe line
		30.04.13	22:07	30.04.13	23:37	GT#2 Diverted damper is closed
		07.05.13	20:35	08.05.13	3:12	CW Pump A Motor Failure
		08.05.13	11:57	08.05.13	13:19	CW Pump B Motor winding temperature increased up to threshold limit
		29.05.13	13:57	29.05.13	16:50	STG trip on GT trip
		03.06.13	10:54	03.06.13	15:57	
		06.06.13	22:50	10.06.13	17:50	Stopped due to low demand and high frequency
		13.06.13	08:16	19.06.13	09:10	
		21.06.13	08:21	21.06.13	13:00	STG trip on GT trip
		27.06.13	18:01	27.06.13	18:42	GT#2 Diverted damper is closed
		29.06.13	17:31	29.06.13	18:29	CW Pump B Discharge valve closed
		30.06.13	14:16	30.06.13	15:34	STG trip on GT trip
		12.07.13	15:00	05.08.13	11:58	Stopped due to low demand and high frequency
		19.08.13	14:29	26.08.13	17:41	
31.08.13	12:52	31.08.13	14:12	STG tripped on internal fault		
25.09.13	12:00	Contd.		Stopped due to low demand and high frequency		

(E) RITHALA POWER STATION

Unit	Capacity in MW	Outage		Synchronization		Reason of Outage
		Date	Time	Date	Time	
1	31.8	19.03.13	17:32	Contd.		No schedule have been given by SLDC on Spot gas

Unit	Capacity in MW	Outage		Synchronization		Reason of Outage
		Date	Time	Date	Time	
2	31.8	05.03.13	15:38	07.06.13	12:05	No schedule have been given by SLDC on Spot gas Gas turbine taken on spot)
		07.06.13	22:41	Contd.		No schedule have been given by SLDC on Spot gas

Unit	Capacity in MW	Outage		Synchronization		Reason of Outage
		Date	Time	Date	Time	
STG	31.8	27.02.13	00:01	07.06.13	17:40	No schedule have been given by SLDC on Spot gas
		07.06.13	22:38	Contd.		No schedule have been given by SLDC on Spot gas

4

ALLOCATION OF POWER TO DELHI

A)

Allocation of power to Delhi from Unallocated quota of Central Sector Generating Stations to Delhi w.e.f. 19.01.2013**Time block 00.00hrs. to 24.00hrs. @ 0% allocation from Unallocated Quota**

Name of the Stn	Installed capacity	Total Un-allocated	Basic Allocation	Basic Allocation at periphery	Allocation out of Unallocated Quota	Allocation out of Un-allocated Quota at Delhi periphery	Total allocation at Delhi periphery
1	2	3	4	5	6	7	(8)=(5)+(7)
NTPC STATIONS							
Singrauli STPS	2000	300	150	130	0	0	130
Rihand-I	1000	150	100	87	0	0	87
Rihand Stage -II	1000	150	126	109	0	0	109
Rihand Stage -III	500	75	66	57	0	0	57
ANTA GPS	419	63	44	41	0	0	41
Auriya GPS	663.36	99	72	67	0	0	67
Dadri GPS	829.78	129	91	85	0	0	85
Dadri NCTPS (Th)	840	0	756	657	0	0	657
Dadri NCTPS (Th) Stage-II	980	147	735	639	0	0	639
Unchahaar-I TPS	420	20	24	21	0	0	21
Unchahaar-II TPS	420	63	47	41	0	0	41
Unchahaar-III TPS	210	31	29	25	0	0	25
TOTAL	9282	1227	2240	1959	0	0	1959
NHPC							
Baira Suil HPS	180	0	20	19	0	0	19
Salal HPS	690	0	80	76	0	0	76
Tanakpur HEP	94	0	12	11	0	0	11
Chamera HEP	540	0	43	41	0	0	41
Chamera-II HEP	300	54	40	38	0	0	38
Chamera-III HEP	231	35	29	28	0	0	28
URI HEP	480	0	53	50	0	0	50
Sewa HEP	120	18	16	15	0	0	15
Dhaulti Ganga HEP	280	42	37	35	0	0	35
Dulhasti HEP	390	58	50	48	0	0	48
TOTAL	3305	206	380	361	0	0	361
NPC							
Narora APS	440	64	47	41	0	0	41
RAPP(B)	440	66	0	0	0	0	0
RAPP (C)	440	64	56	49	0	0	49
TOTAL	1320	194	103	89	0	0	89
SVJNL							
Nathpa Jhakri HEP	1500	149	142	123	0	0	123
THDC							
Tehri Hydro	1000	99	103	89	0	0	89
Koteshwar HEP	400	40	39	37	0	0	37
TOTAL	1400	139	142	127	0	0	127
Total	16807	1915	3007	2660	0	0	2660
Allocation from ER and Tala HEP							
Farakka	1600	0	22	19	0	0	19
Kahalgaon	840	0	51	43	0	0	43
Talchar	1000	0	0	0	0	0	0
Tala HEP	1020	153	30	25	0	0	25
Mejia TPS Unit-6	250	0	29	25	0	0	25
Kahalgaon-II	1500	0	157	131	0	0	131
Total ER	6210	153	290	242	0	0	242
Joint Venture							
Jhajjar TPS	1000	76	231	201	0	0	201
Grand Total	24017	2144	3528	3102	0	0	3102

B) Allocation of power to Delhi from Unallocated quota of Central Sector Generating Stations to Delhi w.e.f. 01.08.2013

Time block 00.00hrs. to 24.00hrs. @ 0% allocation from Unallocated Quota

Name of the Stn	Installed capacity	Total Un-allocated	Basic Allocation	Basic Allocation at periphery	Allocation out of Unallocated Quota	Allocation out of Un-allocated Quota at Delhi periphery	Total allocation at Delhi periphery
1	2	3	4	5	6	7	(8)=(5)+(7)
NTPC STATIONS							
Singrauli STPS	2000	300	150	130	0	0	130
Rihand-I	1000	150	100	87	0	0	87
Rihand Stage -II	1000	150	126	109	0	0	109
Rihand Stage -III	500	75	66	57	0	0	57
ANTA GPS	419	63	44	41	0	0	41
Auriya GPS	663.36	99	72	67	0	0	67
Dadri GPS	829.78	129	91	85	0	0	85
Dadri NCTPS (Th)	840	0	756	657	0	0	657
Dadri NCTPS (Th) Stage-II	980	147	735	639	0	0	639
Unchahaar-I TPS	420	20	24	21	0	0	21
Unchahaar-II TPS	420	63	47	41	0	0	41
Unchahaar-III TPS	210	31	29	25	0	0	25
TOTAL	9282	1227	2240	1959	0	0	1959
NHPC							
Baira Suil HPS	180	0	20	19	0	0	19
Salal HPS	690	0	80	76	0	0	76
Tanakpur HEP	94	0	12	11	0	0	11
Chamera HEP	540	0	43	41	0	0	41
Chamera-II HEP	300	54	40	38	0	0	38
Chamera-III HEP	231	35	29	28	0	0	28
URI HEP	480	0	53	50	0	0	50
Sewa HEP	120	18	16	15	0	0	15
Dhauri Ganga HEP	280	42	37	35	0	0	35
Dulhasti HEP	390	58	50	48	0	0	48
TOTAL	3305	206	380	361	0	0	361
NPC							
Narora APS	440	64	47	41	0	0	41
RAPP(B)	440	66	0	0	0	0	0
RAPP (C)	440	64	56	49	0	0	49
TOTAL	1320	194	103	89	0	0	89
SVJNL							
Nathpa Jhakri HEP	1500	149	142	123	0	0	123
THDC							
Tehri Hydro	1000	99	103	89	0	0	89
Koteshwar HEP	400	40	39	37	0	0	37
TOTAL	1400	139	142	127	0	0	127
Total	16807	1915	3007	2660	0	0	2660
Allocation from ER and Tala HEP							
Farakka	1600	0	22	19	0	0	19
Kahalgaon	840	0	51	43	0	0	43
Talchar	1000	0	0	0	0	0	0
Tala HEP	1020	153	30	25	0	0	25
Mejia TPS Unit-6	250	0	29	25	0	0	25
Kahalgaon-II	1500	0	157	131	0	0	131
Total ER	6210	153	290	242	0	0	242
Joint Venture							
Jhajjar TPS	1500	114	377	327	0	0	327
Grand Total	24517	2182	3674	3229	0	0	3229

5 ALLOCATION OF POWER TO DISCOMS

A) ALLOCATION OF POWER TO VARIOUS LICENCEES AS PER ORDER OF DERC AND DECISION OF GNCTD FOR ALLOCATION OF CENTRAL SECTOR STATIONS (DADRI THERMAL & BTPS) AND STATE SECTOR GENERATING STATIONS w.e.f. 01.04.2011.

(Allocation In %)

(A) 10.00hrs. to 17.00hrs.

SOURCES	LICENSEES					
	NDMC	MES	NDPL	BRPL	BYPL	TOTAL
1. Central Sector without Dadri (Th)	0.00	0.00	29.18	43.58	27.24	100.00
2. Dadri (Th)	14.98	0.00	24.18	36.87	23.97	100.00
3. BTPS	15.94	7.09	21.88	33.37	21.72	100.00
4. RPH	0.85	0.00	28.39	42.97	27.79	100.00
5. GT	0.93	0.00	28.28	42.99	27.80	100.00
6. Pragati	26.69	0.00	20.77	31.76	20.7	100.00
7. DVC	0.00	0.00	29.18	43.58	27.24	100.00
8. BAWANA CCGT*	7.30	1.82	20.688	30.888	19.304	80.00

(B) 00.00hrs. to 10.00hrs. and 17.00hrs. to 24.00hrs.

SOURCES	LICENSEES					
	NDMC	MES	NDPL	BRPL	BYPL	TOTAL
1. Central Sector without Dadri (Th)	0.00	0.00	29.18	43.58	27.24	100.00
2. Dadri (Th)	14.05	0.00	24.18	36.87	24.90	100.00
3. BTPS	15.07	7.09	21.88	33.37	22.59	100.00
4. RPH	0.00	0.00	28.390	42.97	28.64	100.00
5. GT	0.00	0.00	28.28	42.99	28.73	100.00
6. Pragati	25.76	0.00	20.77	31.76	21.71	100.00
7. DVC	0.00	0.00	29.18	43.58	27.24	100.00
8. BAWANA CCGT*	7.30	1.82	20.688	30.888	19.304	80.00

* 20% POWER OF BAWANA CCGT ALLOCATED TO HARYANA (10%) & PUNJAB (10%)

B) ALLOCATION OF POWER TO VARIOUS LICENCEES AS PER ORDER OF DERC AND DECISION OF GNCTD FOR ALLOCATION OF CENTRAL SECTOR STATIONS (DADRI THERMAL & BTPS) AND STATE SECTOR GENERATING STATIONS w.e.f. 06.08.2013.

(Allocation In %)

(A) 10.00hrs. to 17.00hrs.

SOURCES	LICENSEES					
	NDMC	MES	NDPL	BRPL	BYPL	TOTAL
1. Central Sector without Dadri (Th)	0	0	29.18	43.58	27.24	100.00
2. Dadri (Th)	16.63	0	24.22	36.86	22.39	100.00
3. BTPS	17.73	7.09	21.81	33.2	20.17	100.00
4. RPH	0	0	29.025	44.133	26.842	100.00
5. GT	0	0	29.02	44.16	26.82	100.00
6. Pragati	30.3	0	20.22	30.78	18.7	100.00
7. DVC	0	0	29.18	43.58	27.24	100.00
8. BAWANA CCGT*	7.30	1.82	20.688	30.888	19.304	80.00

(B) 00.00hrs. to 10.00hrs. and 17.00hrs. to 24.00hrs.

SOURCES	LICENSEES					
	NDMC	MES	NDPL	BRPL	BYPL	TOTAL
1. Central Sector without Dadri (Th)	0	0	29.18	43.58	27.24	100.00
2. Dadri (Th)	16.53	0	24.22	36.86	22.39	100.00
3. BTPS	17.73	7.09	21.81	33.2	20.17	100.00
4. RPH	0	0	29.025	44.133	26.842	100.00
5. GT	0	0	29.02	44.16	26.82	100.00
6. Pragati	30.3	0	20.22	30.78	18.7	100.00
7. DVC	0	0	29.18	43.58	27.24	100.00
8. BAWANA CCGT*	7.30	1.82	20.688	30.888	19.304	80.00

* 20% POWER OF BAWANA CCGT ALLOCATED TO HARYANA (10%) & PUNJAB (10%)

6 POWER AVAILABILITY-DEMAND POSITION AT THE TIME OF PEAK DEMAND MET DURING SEPTEMBER 2013

All figures in MW

Date	Time of peak demand	Generation within Delhi								Import from the Grid	Schedule from the Grid	OD(-)/UD(+)	Demand met	Shedding	Un-Restricted Demand
		RPH	GT	PPCL	Rithala	Bawana	Towmcl	BTPS	Total						
(1)	(2)	(3)	(4)	(5)	(6)	(7)	(8)	(9)= (3) to (8)	(10)	(11)	(12)= (11) - (10)	(13)= (11)+ (12)	(14)	(15)= (13)+ (14)	
1	22.51.26	47	75	295	0	242	14	380	1053	3467	3427	40	4520	0	4520
2	22.43.17	46	75	294	0	266	14	399	1094	3630	3570	60	4724	30	4754
3	15.12.31	44	73	268	0	265	13	279	942	3770	3760	10	4712	0	4712
4	23.16.10	46	151	294	0	284	16	237	1028	3585	3480	105	4613	0	4613
5	15.34.49	43	173	287	0	275	13	238	1029	3683	3588	95	4712	0	4712
6	23.03.03	45	151	290	0	276	13	241	1016	3594	3430	164	4610	0	4610
7	23.07.05	47	156	294	0	298	15	404	1214	3330	3341	-11	4544	0	4544
8	00.00.59	48	157	296	0	249	15	398	1163	3303	3383	-80	4466	0	4466
9	15.32.57	46	78	263	0	245	16	373	1021	3429	3515	-86	4450	0	4450
10	22.32.51	48	80	293	0	244	14	432	1111	3563	3561	2	4674	0	4674
11	22.59.59	0	80	295	0	277	16	425	1093	3710	3492	218	4803	0	4803
12	00.00.13	0	80	295	0	276	16	425	1092	3618	3564	54	4710	0	4710
13	15.28.30	51	146	289	0	278	16	408	1188	3599	3644	-45	4787	0	4787
14	22.37.54	93	154	293	0	279	15	278	1112	3588	3449	139	4700	0	4700
15	00.00.10	89	155	292	0	287	16	302	1141	3411	3274	137	4552	0	4552
16	14.39.50	91	154	292	0	251	14	509	1311	3316	3387	-71	4627	0	4627
17	22.41.48	93	78	260	0	274	13	514	1232	3174	3267	-93	4406	0	4406
18	22.32.00	91	79	296	0	277	13	595	1351	3073	3186	-113	4424	0	4424
19	22.54.49	90	160	294	0	277	15	556	1392	3210	3163	47	4602	0	4602
20	15.09.06	90	158	295	0	263	16	557	1379	3102	3156	-54	4481	0	4481
21	00.00.11	90	162	265	0	275	13	510	1315	2722	2748	-26	4037	0	4037
22	22.46.24	39	81	255	0	280	0	433	1088	2919	2985	-66	4007	0	4007
23	15.03.07	48	78	275	0	239	0	445	1085	3308	3304	4	4393	5	4398
24	23.00.00	94	159	296	0	232	0	484	1265	3277	3221	56	4542	0	4542
25	15.33.20	89	159	263	0	-9	0	449	951	3455	3396	59	4406	3	4409
26	19.03.35	44	161	296	0	-7	9	504	1007	3348	3273	75	4355	0	4355
27	15.03.33	45	157	290	0	-9	9	506	998	3462	3185	277	4460	47	4507
28	18.48.59	28	158	139	0	-15	12	421	743	3483	3119	364	4226	0	4226
29	00.01.37	48	159	142	0	-9	11	454	805	3206	3033	173	4011	28	4039
30	18:51:35	0	158	260	0	-3	8	505	928	3189	3391	-202	4117	0	4117

7 POWER AVAILABILITY- DEMAND POSITION AT THE TIME OF MAXIMUM UNRESTRICTED DEMAND DURING SEPTEMBER 2013

Date	Time of peak demand	Generation within Delhi								Import from the Grid	Schedule from the Grid	OD(-)/UD(+)	Demand met	Shedding	Un-Restricted Demand
		RPH	GT	PPCL	Rithala	Bawana	Towmcl	BTPS	Total						
(1)	(2)	(3)	(4)	(5)	(6)	(7)	(8)	(9)= (3) to (8)	(10)	(11)	(12)= (11) - (10)	(13)= (11)+ (12)	(14)	(15)= (13)+ (14)	
1	22.51.26	47	75	295	0	242	14	380	1053	3467	3427	40	4520	0	4520
2	22.43.17	46	75	294	0	266	14	399	1094	3630	3570	60	4724	30	4754
3	15.12.31	44	73	268	0	265	13	279	942	3770	3760	10	4712	0	4712
4	15.30.00														
5	15.34.49	43	173	287	0	275	13	238	1029	3683	3588	95	4712	0	4712
6	23.03.03	45	151	290	0	276	13	241	1016	3594	3430	164	4610	0	4610
7	23.07.05	47	156	294	0	298	15	404	1214	3330	3341	-11	4544	0	4544
8	00.00.59	48	157	296	0	249	15	398	1163	3303	3383	-80	4466	0	4466
9	15.32.57	46	78	263	0	245	16	373	1021	3429	3515	-86	4450	0	4450
10	22.32.51	48	80	293	0	244	14	432	1111	3563	3561	2	4674	0	4674
11	22.59.59	0	80	295	0	277	16	425	1093	3710	3492	218	4803	0	4803
12	00.00.13	0	80	295	0	276	16	425	1092	3618	3564	54	4710	0	4710
13	15.28.30	51	146	289	0	278	16	408	1188	3599	3644	-45	4787	0	4787
14	22.37.54	93	154	293	0	279	15	278	1112	3588	3449	139	4700	0	4700
15	00.00.10	89	155	292	0	287	16	302	1141	3411	3274	137	4552	0	4552
16	14.39.50	91	154	292	0	251	14	509	1311	3316	3387	-71	4627	0	4627
17	22.41.48	93	78	260	0	274	13	514	1232	3174	3267	-93	4406	0	4406
18	22.32.00	91	79	296	0	277	13	595	1351	3073	3186	-113	4424	0	4424
19	22.54.49	90	160	294	0	277	15	556	1392	3210	3163	47	4602	0	4602
20	15.09.06	90	158	295	0	263	16	557	1379	3102	3156	-54	4481	0	4481
21	00.00.11	90	162	265	0	275	13	510	1315	2722	2748	-26	4037	0	4037
22	22.46.24	39	81	255	0	280	0	433	1088	2919	2985	-66	4007	0	4007
23	15.03.07	48	78	275	0	239	0	445	1085	3308	3304	4	4393	5	4398
24	23.00.00	94	159	296	0	232	0	484	1265	3277	3221	56	4542	0	4542
25	15.33.20	89	159	263	0	-9	0	449	951	3455	3396	59	4406	3	4409
26	19.03.35	44	161	296	0	-7	9	504	1007	3348	3273	75	4355	0	4355
27	15.03.33	45	157	290	0	-9	9	506	998	3462	3185	277	4460	47	4507
28	18.48.59	28	158	139	0	-15	12	421	743	3483	3119	364	4226	0	4226
29	00.01.37	48	159	142	0	-9	11	454	805	3206	3033	173	4011	28	4039
30	18:51:35	0	158	260	0	-3	8	505	928	3189	3391	-202	4117	0	4117

SOURCEWISE SCHEDULED DRAWL FROM NORTHERN GRID AS WELL AS AVAILABILITY WITHIN DELHI FOR SEPTEMBER 2013

A) AVAILABILITY FROM GENCO AND PRAGATI STNs. (all fig in MUs)

A (i) RPH	44.119
(ii) GT+STG	90.082
(iii) PRAGATI	199.404
(iv) RITHALA	0.000
(v) BAWANA CCGT	156.101
(vi) Timarpur - Okhla	9.204
TOTAL	498.910
B) AVAILABILITY FROM BTPS	309.086
C) AUXILIARY CONSUMPTION OF GENERATING STNs. EXCLUDING BTPS	21.684
D) NET GENERATION AVAILABLE WITHIN DELHI(A+B-C)	786.312

B) SOURCE WISE SCHEDULED DRAWL FROM THE NORTHERN GRID

NAME OF THE STATION	AVAILABILITY AT POWER PLANT	AVAILABILITY AT DELHI PERIPHERY	ALLOCATION MADE BY NRLDC AT POWER PLANT	ALLOCATION MADE BY NRLDC AT DELHI PERIPHERY
B/SUIL	5.632	5.492	5.632	5.492
SALAL	43.955	42.857	43.955	42.857
SASAN	18.287	17.828	18.280	17.820
TANKAPUR	7.173	6.992	7.173	6.992
CHAMERA	16.047	15.648	16.047	15.648
CHAMERA -II	18.708	18.242	18.708	18.242
CHAMERA -III	12.507	12.195	12.507	12.195
DHAULIGANGA	0.000	0.000	0.000	0.000
SEWA -2	4.080	3.979	4.080	3.979
URI	24.618	24.004	24.618	24.004
KOTESHWAR	12.453	12.146	12.453	12.146
MUNDRA_UMPP	0.000	0.000	0.000	0.000
ANTA (GAS)	7.711	7.515	7.739	7.543
ANTA (RLNG)	21.652	21.111	0.000	0.000
ANTA (LIQUID)	0.000	0.000	0.000	0.000
DADRI (GAS)	30.760	29.978	30.611	29.832
DADRI (RLNG)	28.326	27.624	0.000	0.000
DADRI (LIQUID)	0.000	0.000	0.000	0.000
AURAIYA (GAS)	10.835	10.562	10.779	10.507
AURAIYA (RLNG)	37.920	36.971	0.000	0.000
AURAIYA (LIQUID)	0.000	0.000	0.000	0.000
SINGRAULI	92.835	90.504	92.835	90.504
RIHAND -I	65.292	63.655	64.142	62.533
RIHAND -II	47.414	46.228	46.109	44.956
RIHAND -III	44.183	43.076	44.283	43.174
UNCHAHAAR-I	16.181	15.775	15.425	15.038
UNCHAHAAR-II	32.586	31.769	31.439	30.651
UNCHAHAAR-III	19.649	19.157	19.177	18.695
DADRI (TH)	407.257	397.074	349.033	340.313
DADRI (TH) STAGE-II	523.745	510.621	491.096	478.792
NAPP	22.554	21.988	22.538	21.973
RAPP 'B'	0.000	0.000	0.000	0.000
RAPP 'C'	35.371	34.482	35.429	34.538
NATHPA JHAKRI	80.410	78.410	76.879	74.975
DULASTI	34.144	33.289	34.144	33.289
TEHRI	38.337	37.391	38.337	37.391
JHAJJAR	267.269	260.570	48.913	47.668
KHELGAON	33.103	32.273	22.522	21.951
KHELGAON-II	80.699	78.658	69.363	67.599
FARAKA	13.458	13.120	12.438	12.125
TALA	17.565	17.128	17.565	17.128
TALCHER	0.000	0.000	0.000	0.000
DVC	228.614	226.184	226.184	220.509
UTTRANCHAL	17.775	17.601	17.601	17.177

NAME OF THE STATION	AVAILABILITY AT POWER PLANT	AVAILABILITY AT DELHI PERIPHERY	ALLOCATION MADE BY NRLDC AT POWER PLANT	ALLOCATION MADE BY NRLDC AT DELHI PERIPHERY
HARYANA	0.225	0.223	0.223	0.217
METHON POWER(NDPL)LT-06	172.916	171.088	171.088	166.770
DVC MEJIA (LT-08)(BYPL)	73.952	73.165	73.165	71.333
URS	0.000	0.000	0.000	0.000
RAJASTHAN	31.874	31.564	31.564	30.803
HIMACHAL PRADESH	46.010	45.542	45.542	44.409
MADHYA PRADESH(WR)	83.372	82.179	82.179	80.129
JAMMU & KASHMIR	11.646	11.532	11.532	11.254
DVC (FOR NDPL) LT-09	9.778	9.674	9.674	9.432
HARYANA (LT-05)	22.944	22.718	22.718	22.166
TO UTTAR PRADESH	-4.292	-4.347	-4.347	-4.456
TO BIHAR	-0.336	-0.340	-0.340	-0.348
TO KERALA	0.000	0.000	0.000	0.000
TO ANDHRA	-0.330	-0.337	-0.337	-0.345
TO MADHYA PRADESH	0.000	0.000	0.000	0.000
TO GUJRAT	-0.048	-0.049	-0.049	-0.051
TO RAJASTHAN	-0.669	-0.680	-0.680	-0.697
TO ASSAM	0.000	0.000	0.000	0.000
TO SIKKIM	0.000	0.000	0.000	0.000
TO HIMACHAL PRADESH	-0.098	-0.099	-0.099	-0.101
TO WEST BENGAL	0.000	0.000	0.000	0.000
POWER EXCHANGE(IEX)	2.557	2.492	2.557	2.492
TO POWER EXCHANGE (IEX)	-249.087	-255.498	-249.087	-255.498
POWRER EXCHANGE(PX)	0.000	0.000	0.000	0.000
TO POWER EXCHANGE (PX)	-7.708	-7.903	-7.708	-7.903
TO SHARE PROJECT (HARYANA)	-1.659	-1.701	-1.659	-1.701
TO SHARE PROJECT (PUNJAB)	-11.558	-11.847	-11.558	-11.847
TOTAL	2598.594	2529.476	2162.412	2094.297

C) AGENCY WISE BREAKUP OF ENERGY SCHEDULED DRAWL FROM THE GRID

NAME OF THE STATION	AVAILABILITY AT POWER PLANT	AVAILABILITY AT DELHI PERIPHERY	ALLOCATION MADE BY NRLDC AT POWER PLANT	ALLOCATION MADE BY NRLDC AT DELHI PERIPHERY
NTPC - NR	1386.345	1351.621	1202.668	1172.539
NTPC - ER	127.260	124.051	104.324	101.674
NHPC	166.865	162.699	166.865	162.699
NPC	57.925	56.471	57.967	56.511
SASAN	18.287	17.828	18.280	17.820
KOTESHWAR	12.453	12.146	12.453	12.146
MUNDRA_UMPP	0.000	0.000	0.000	0.000
NATHPA JHAKRI	80.410	78.410	76.879	74.975
TEHRI	38.337	37.391	38.337	37.391
TALA	17.565	17.128	17.565	17.128
JHAJJAR	267.269	260.570	48.913	47.668
TALCHER	0.000	0.000	0.000	0.000
DVC	228.614	226.184	226.184	220.509
UTTRANCHAL	17.775	17.601	17.601	17.177
HARYANA	0.225	0.223	0.223	0.217
METHON POWER (NDPL)-LT-06	172.916	171.088	171.088	166.770
DVC MEJIA (LT-08)(BYPL)	73.952	73.165	73.165	71.333
URS	0.000	0.000	0.000	0.000
RAJASTHAN	31.874	31.564	31.564	30.803
HIMACHAL PRADESH	46.010	45.542	45.542	44.409
MEGHALAYA	0.000	0.000	0.000	0.000
MADHYA PRADESH(WR)	83.372	82.179	82.179	80.129
JAMMU & KASHMIR	11.646	11.532	11.532	11.254
DVC (FOR NDPL) LT-09	9.778	9.674	9.674	9.432
HARYANA (LT -05)	22.944	22.718	22.718	22.166
POWER EXCHANGE(IEX)	2.557	2.492	2.557	2.492
TOTAL	2874.379	2812.275	2438.275	2377.243

D) AGENCY WISE BREAKUP OF ENERGY SCHEDULED BY NRLDC FOR EXPORT TO OTHER UTILITIES FROM DTL

NAME OF THE STATION	AVAILABILITY AT POWER PLANT	AVAILABILITY AT PERIPHERY	ALLOCATION MADE BY NRLDC AT POWER PLANT	ALLOCATION MADE BY NRLDC AT POWER PERIPHERY
TO HARYANA	0.000	0.000	0.000	0.000
TO ORISSA	0.000	0.000	0.000	0.000
TO UTTAR PRADESH	-4.292	-4.347	-4.347	-4.456
TO BIHAR	-0.336	-0.340	-0.340	-0.348
TO ANDHRA	-0.330	-0.337	-0.337	-0.345
TO GUJRAT	-0.048	-0.049	-0.049	-0.051
TO RAJASTHAN	-0.669	-0.680	-0.680	-0.697
TO HIMACHAL PRADESH	-0.098	-0.099	-0.099	-0.101
TO POWER EXCHANGE (IEX)	-249.087	-255.498	-249.087	-255.498
TO POWER EXCHANGE (PX)	-7.708	-7.903	-7.708	-7.903
TO SHARE PROJECT (HARYANA)	-1.659	-1.701	-1.659	-1.701
TO SHARE PROJECT (PUNJAB)	-11.558	-11.847	-11.558	-11.847
TOTAL	275.785	-282.800	-275.863	-282.946
TOTAL SCHEDULED DRAWAL FROM THE GRID	2598.594	2529.476	2162.412	2094.297
TOTAL CONSUMPTION INCLUDING AUX. OF GENERATING STNs. EXCLUDING BTPS				2646.263
NET CONSUMPTION				2624.579
AVAILABILITY WITHIN DELHI				786.312
ACTUAL DRAWAL FROM THE GRID				1838.267
OVER DRAWAL(+)/UNDER DRAWAL(-) FROM THE GRID ON THE BASIS OF SCHEDULED ALLOCATION MADE BY NRLDC TO DELHI AT PERIPHERY				-256.030
LOAD SHEDDING				3.982
UNRESTRICTED DEMAND (GROSS)				2650.245
UNRESTRICTED DEMAND (NET)				2628.561
MAX. NET CONSUMPTION				95.984 ON 13.09.2013
MAX. LOAD SHEDDING				254MW ON 28.09.2013 AT 19.00HRS.
PEAK LOAD	Peak Demand during the month			SHEDDING AT PEAK TIME
DAY PEAK	4787MW AT 15.28.30HRS ON 13.09.2013			0 MW
EVENING PEAK	4803MW AT 22.59.59HRS ON 11.09.2013			0 MW
P.L.F. OF GENCO AND PRAGATI STNs.	RPH			45.39%
	GT			46.34%
	PRAGATI			83.92%
	RITHALA			0.00%
	BAWANA			31.70%
	Timarpur Okhla			79.90%

SHEDDING DETAILS DURING THE MONTH OF SEPTEMBER 2013.

ALL FIGURES IN MUs

DATE	No. of Under Freq. Relay Operated	Shedding due to under frequency relay operation in MUs					Shedding due to Grid Restrictions (Over drawl / low freq.)			
		BSES		NDPL	NDMC	TOTAL	BSES		NDPL	NDMC
		BYPL	BRPL				BYPL	BRPL		
1	2	3	4	5	6	7=3 to 6	8	9	10	11
01-Sep-13	1	0.000	0.000	0.001	0.000	0.001	0.000	0.000	0.000	0.000
02-Sep-13	1	0.000	0.000	0.001	0.000	0.001	0.000	0.000	0.000	0.000
03-Sep-13	1	0.000	0.000	0.001	0.000	0.001	0.000	0.000	0.000	0.000
04-Sep-13	2	0.001	0.001	0.000	0.000	0.002	0.053	0.084	0.288	0.000
05-Sep-13	1	0.000	0.000	0.000	0.000	0.000	0.008	0.019	0.000	0.000
06-Sep-13	4	0.000	0.009	0.001	0.000	0.010	0.033	0.018	0.002	0.000
07-Sep-13	1	0.000	0.000	0.003	0.000	0.003	0.029	0.015	0.000	0.000
08-Sep-13	1	0.000	0.000	0.000	0.000	0.000	0.000	0.000	0.000	0.000
09-Sep-13	5	0.001	0.000	0.002	0.000	0.003	0.000	0.000	0.000	0.000
10-Sep-13	0	0.000	0.000	0.001	0.000	0.001	0.000	0.000	0.000	0.000
11-Sep-13	3	0.000	0.000	0.002	0.000	0.002	0.000	0.000	0.000	0.000
12-Sep-13	11	0.006	0.002	0.003	0.000	0.011	0.000	0.014	0.000	0.000
13-Sep-13	1	0.000	0.000	0.000	0.000	0.000	0.000	0.000	0.000	0.000
14-Sep-13	0	0.000	0.000	0.000	0.000	0.000	0.000	0.000	0.000	0.000
15-Sep-13	0	0.000	0.000	0.000	0.000	0.000	0.000	0.000	0.000	0.000
16-Sep-13	0	0.000	0.000	0.000	0.000	0.000	0.000	0.000	0.000	0.000
17-Sep-13	0	0.000	0.000	0.000	0.000	0.000	0.000	0.000	0.000	0.000
18-Sep-13	0	0.000	0.000	0.000	0.000	0.000	0.000	0.000	0.000	0.000
19-Sep-13	0	0.000	0.000	0.000	0.000	0.000	0.006	0.019	0.006	0.000
20-Sep-13	0	0.000	0.000	0.000	0.000	0.000	0.000	0.000	0.000	0.000
21-Sep-13	0	0.000	0.000	0.000	0.000	0.000	0.000	0.000	0.000	0.000
22-Sep-13	1	0.000	0.000	0.000	0.000	0.000	0.000	0.000	0.000	0.000
23-Sep-13	0	0.000	0.000	0.000	0.000	0.000	0.007	0.072	0.016	0.000
24-Sep-13	0	0.000	0.000	0.000	0.000	0.000	0.000	0.000	0.000	0.000
25-Sep-13	0	0.000	0.000	0.000	0.000	0.000	0.000	0.000	0.000	0.000
26-Sep-13	0	0.000	0.000	0.000	0.000	0.000	0.000	0.000	0.000	0.000
27-Sep-13	0	0.000	0.000	0.000	0.000	0.000	0.071	0.059	0.097	0.000
28-Sep-13	0	0.000	0.000	0.000	0.000	0.000	0.042	0.017	0.056	0.000
29-Sep-13	0	0.000	0.000	0.000	0.000	0.000	0.000	0.000	0.000	0.000
30-Sep-13	0	0.000	0.000	0.000	0.000	0.000	0.000	0.000	0.000	0.000
TOTAL	33	0.008	0.012	0.015	0.000	0.035	0.249	0.317	0.465	0.000

ALL FIGURES IN MU\$

Date	Shedding due to Transmission/Grid Constraints in Central Sector Stations / TTC / ATC VIOLATION				TOTAL 16=8to15	TOTAL SHEDDING DUE TO GRID RESTRICTIONS 17=16+7	Due to T&D Constraints				
	BSES		NDPL	NDMC			DTL				
	BYPL	BRPL					BSES		NDPL	NDMC	MES
			12	13			18	19			
01-Sep-13	0.000	0.000	0.000	0.000	0.000	0.001	0.000	0.002	0.105	0.000	0.000
02-Sep-13	0.000	0.000	0.000	0.000	0.000	0.001	0.000	0.020	0.000	0.000	0.000
03-Sep-13	0.000	0.000	0.000	0.000	0.000	0.001	0.043	0.003	0.002	0.013	0.000
04-Sep-13	0.000	0.000	0.000	0.000	0.425	0.427	0.083	0.069	0.023	0.022	0.000
05-Sep-13	0.000	0.000	0.000	0.000	0.027	0.027	0.000	0.020	0.000	0.000	0.000
06-Sep-13	0.000	0.000	0.000	0.000	0.053	0.063	0.001	0.049	0.000	0.000	0.000
07-Sep-13	0.000	0.000	0.000	0.000	0.044	0.047	0.000	0.051	0.000	0.000	0.000
08-Sep-13	0.000	0.000	0.000	0.000	0.000	0.000	0.021	0.001	0.000	0.000	0.000
09-Sep-13	0.000	0.000	0.000	0.000	0.000	0.003	0.000	0.000	0.000	0.000	0.000
10-Sep-13	0.000	0.000	0.000	0.000	0.000	0.001	0.000	0.010	0.000	0.000	0.000
11-Sep-13	0.000	0.000	0.000	0.000	0.000	0.002	0.000	0.025	0.000	0.000	0.000
12-Sep-13	0.000	0.000	0.000	0.000	0.014	0.025	0.000	0.000	0.005	0.000	0.000
13-Sep-13	0.000	0.000	0.000	0.000	0.000	0.000	0.000	0.086	0.000	0.000	0.000
14-Sep-13	0.000	0.000	0.000	0.000	0.000	0.000	0.014	0.016	0.012	0.000	0.000
15-Sep-13	0.012	0.026	0.000	0.000	0.038	0.038	0.000	0.002	0.000	0.000	0.000
16-Sep-13	0.000	0.000	0.000	0.000	0.000	0.000	0.000	0.011	0.013	0.000	0.000
17-Sep-13	0.000	0.000	0.000	0.000	0.000	0.000	0.053	0.043	0.000	0.000	0.000
18-Sep-13	0.000	0.000	0.000	0.000	0.000	0.000	0.000	0.000	0.014	0.000	0.000
19-Sep-13	0.014	0.110	0.077	0.000	0.232	0.232	0.000	0.007	0.000	0.000	0.000
20-Sep-13	0.000	0.086	0.020	0.000	0.106	0.106	0.000	0.000	0.019	0.000	0.000
21-Sep-13	0.000	0.000	0.000	0.000	0.000	0.000	0.000	0.003	0.000	0.000	0.000
22-Sep-13	0.000	0.000	0.000	0.000	0.000	0.000	0.000	0.000	0.132	0.000	0.000
23-Sep-13	0.000	0.000	0.000	0.000	0.095	0.095	0.006	0.005	0.000	0.000	0.000
24-Sep-13	0.000	0.129	0.089	0.000	0.218	0.218	0.000	0.000	0.035	0.000	0.000
25-Sep-13	0.000	0.000	0.000	0.000	0.000	0.000	0.000	0.000	0.000	0.000	0.000
26-Sep-13	0.004	0.058	0.000	0.000	0.062	0.062	0.000	0.000	0.000	0.000	0.000
27-Sep-13	0.000	0.000	0.000	0.000	0.227	0.227	0.000	0.000	0.000	0.000	0.000
28-Sep-13	0.016	0.000	0.013	0.000	0.144	0.144	0.000	0.000	0.000	0.000	0.000
29-Sep-13	0.000	0.000	0.003	0.000	0.003	0.003	0.006	0.016	0.002	0.000	0.000
30-Sep-13	0.000	0.000	0.000	0.000	0.000	0.000	0.006	0.000	0.000	0.000	0.000
TOTAL	0.046	0.409	0.202	0.000	1.688	1.723	0.233	0.439	0.362	0.035	0.000

ALL FIGURES IN MUs

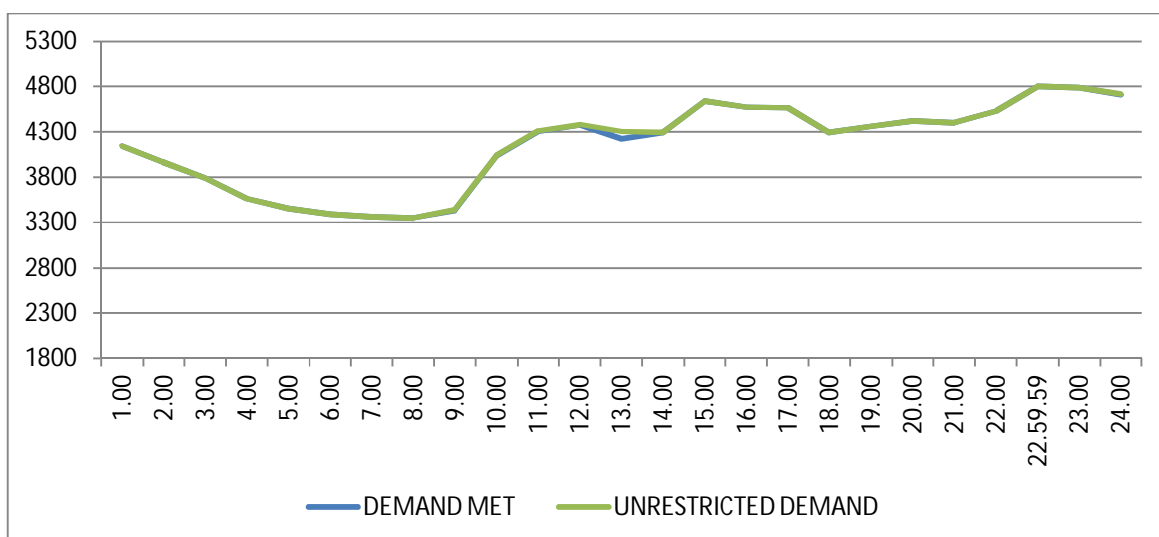
DATE	DUE TO T&D CONSTRAINTS				OTHER AGENCIES LIKE GENCO, BBMB, BTPS ETC.	THEFT PRONE SHEDDING			TOTAL SHEDDING DUE TO T&D CONSTS. & THEFT PRONE	GRAND TOTAL
	DISCOMS					BSES		NDPL		
	BSES		NDPL	NDMC		BSES				
	BYPL	BRPL				BYPL	BRPL			
1	23	24	25	26	27	28	29	30=18 to29	31=30+17	
01-Sep-13	0.000	0.020	0.000	0.000	0.000	0.000	0.000	0.000	0.127	0.128
02-Sep-13	0.000	0.017	0.008	0.000	0.001	0.000	0.000	0.000	0.047	0.048
03-Sep-13	0.000	0.004	0.005	0.000	0.000	0.000	0.000	0.000	0.070	0.071
04-Sep-13	0.062	0.038	0.002	0.000	0.007	0.000	0.000	0.000	0.313	0.740
05-Sep-13	0.000	0.003	0.000	0.000	0.000	0.000	0.000	0.000	0.023	0.050
06-Sep-13	0.000	0.000	0.000	0.000	0.000	0.000	0.000	0.000	0.050	0.113
07-Sep-13	0.000	0.004	0.003	0.000	0.025	0.000	0.000	0.000	0.108	0.155
08-Sep-13	0.000	0.002	0.000	0.000	0.002	0.000	0.000	0.000	0.028	0.028
09-Sep-13	0.008	0.022	0.000	0.000	0.000	0.000	0.000	0.000	0.030	0.033
10-Sep-13	0.023	0.041	0.011	0.000	0.000	0.000	0.000	0.000	0.085	0.086
11-Sep-13	0.000	0.123	0.000	0.000	0.003	0.000	0.000	0.000	0.154	0.156
12-Sep-13	0.003	0.000	0.027	0.000	0.000	0.000	0.000	0.000	0.035	0.060
13-Sep-13	0.007	0.000	0.013	0.000	0.000	0.000	0.000	0.000	0.106	0.106
14-Sep-13	0.032	0.014	0.007	0.000	0.000	0.000	0.000	0.000	0.095	0.095
15-Sep-13	0.000	0.000	0.001	0.000	0.000	0.000	0.000	0.000	0.003	0.041
16-Sep-13	0.001	0.057	0.011	0.000	0.001	0.000	0.000	0.000	0.095	0.095
17-Sep-13	0.037	0.172	0.005	0.000	0.000	0.000	0.000	0.000	0.310	0.310
18-Sep-13	0.023	0.009	0.010	0.000	0.000	0.000	0.000	0.000	0.056	0.056
19-Sep-13	0.000	0.001	0.000	0.000	0.000	0.000	0.000	0.000	0.008	0.240
20-Sep-13	0.025	0.032	0.013	0.000	0.000	0.000	0.000	0.000	0.089	0.195
21-Sep-13	0.000	0.007	0.015	0.000	0.000	0.000	0.000	0.000	0.025	0.025
22-Sep-13	0.009	0.000	0.000	0.000	0.000	0.000	0.000	0.000	0.141	0.141
23-Sep-13	0.022	0.007	0.005	0.000	0.000	0.000	0.000	0.000	0.045	0.140
24-Sep-13	0.016	0.043	0.017	0.000	0.000	0.000	0.000	0.000	0.111	0.329
25-Sep-13	0.018	0.012	0.006	0.000	0.007	0.000	0.000	0.000	0.050	0.050
26-Sep-13	0.004	0.021	0.005	0.000	0.000	0.000	0.000	0.000	0.030	0.092
27-Sep-13	0.010	0.000	0.000	0.000	0.004	0.000	0.000	0.000	0.018	0.245
28-Sep-13	0.015	0.000	0.000	0.000	0.000	0.000	0.000	0.000	0.015	0.159
29-Sep-13	0.000	0.000	0.000	0.000	0.000	0.000	0.000	0.002	0.026	0.029
30-Sep-13	0.002	0.000	0.000	0.000	0.005	0.000	0.000	0.003	0.021	0.021
TOTAL	0.317	0.649	0.164	0.000	0.055	0.000	0.000	0.005	2.314	4.037

DATE	(NET CONS.)	MAXL DEMAND MET DURING THE DAY	TIME OF OCCURRENCE OF MAX DEMAND	SHEDDING AT THIS TIME	UN-RESTRICTED DEMAND	MAXIMUM UN-RESTRICTED DEMAND DURING THE DAY	TIME OF MAX. UN-REST. DEMAND	DEMAND AT THAT TIME	SHEDDING AT THAT TIME
	In Mus.	IN MW	IN HRS.	IN MW	IN MW	IN MW	HRS.	IN MW	IN MW
1	32	33	34	35	36=33+35	37=39+40	38	39	40
01-Sep-13	82.709	4520	22:51:26	0	4520	4520	22:51:26	4520	0
02-Sep-13	88.680	4724	22:43:17	30	4754	4754	22:43:17	4724	30
03-Sep-13	91.472	4712	15:12:31	0	4712	4712	15:12:31	4712	0
04-Sep-13	92.371	4613	23:16:10	0	4613	4710	15:30	4565	145
05-Sep-13	90.826	4712	15:34:49	0	4712	4712	15:34:49	4712	0
06-Sep-13	89.501	4652	23:03:03	0	4652	4652	23:03:03	4652	0
07-Sep-13	89.361	4544	23:07:05	0	4544	4544	23:07:05	4544	0
08-Sep-13	84.618	4466	00:00:59	0	4466	4466	00:00:59	4466	0
09-Sep-13	89.698	4450	15:32:57	0	4450	4450	15:32:57	4450	0
10-Sep-13	91.221	4674	'22:32:51	0	4674	4674	'22:32:51	4674	0
11-Sep-13	92.644	4803	22:59:59	0	4803	4803	22:59:59	4803	0
12-Sep-13	93.461	4710	00:00:13	0	4710	4710	00:00:13	4710	0
13-Sep-13	95.984	4787	15:28:30	0	4787	4787	15:28:30	4787	0
14-Sep-13	86.711	4700	22:37:54	0	4700	4700	22:37:54	4700	0
15-Sep-13	88.236	4552	00:00:10	0	4552	4552	00:00:10	4552	0
16-Sep-13	89.673	4627	14:39:50	0	4627	4627	14:39:50	4627	0
17-Sep-13	87.739	4406	22:41:48	0	4406	4406	22:41:48	4406	0
18-Sep-13	86.654	4424	22:32	0	4424	4424	22:32	4424	0
19-Sep-13	90.137	4602	22:54:49	0	4602	4602	22:54:49	4602	0
20-Sep-13	89.661	4481	15:09:06	0	4481	4481	15:09:06	4481	0
21-Sep-13	78.563	4037	00:00:11	0	4037	4037	00:00:11	4037	0
22-Sep-13	73.501	4007	22:46:24	0	4007	4007	22:46:24	4007	0
23-Sep-13	85.610	4393	15:03:07	5	4398	4398	15:03:07	4393	5
24-Sep-13	88.616	4542	23:00	0	4542	4542	23:00	4542	0
25-Sep-13	89.462	4406	15:33:20	3	4409	4409	15:33:20	4406	3
26-Sep-13	85.972	4355	19:03:35	0	4355	4355	19:03:35	4355	0
27-Sep-13	87.221	4460	15:03:33	1	4461	4461	15:03:33	4460	1
28-Sep-13	83.293	4226	18:48:59	0	4226	4226	18:48:59	4226	0
29-Sep-13	79.246	4011	00:01:37	28	4039	4039	00:01:37	4011	28
30-Sep-13	81.738	4117	18:51:35	0	4117	4117	18:51:35	4117	0
TOTAL	2624.579	4803 11.09.2013	22:59:59	0	4803 11.09.2013	4803	22:59:59	4803	0

10 **LOAD PATTERN OF DELHI ON THE DAY OF PEAK DEMAND MET DURING SEPTEMBER 2013 ON 11.09.2013- 4803MW AT 22.59.59HRS.**

All figures in MW

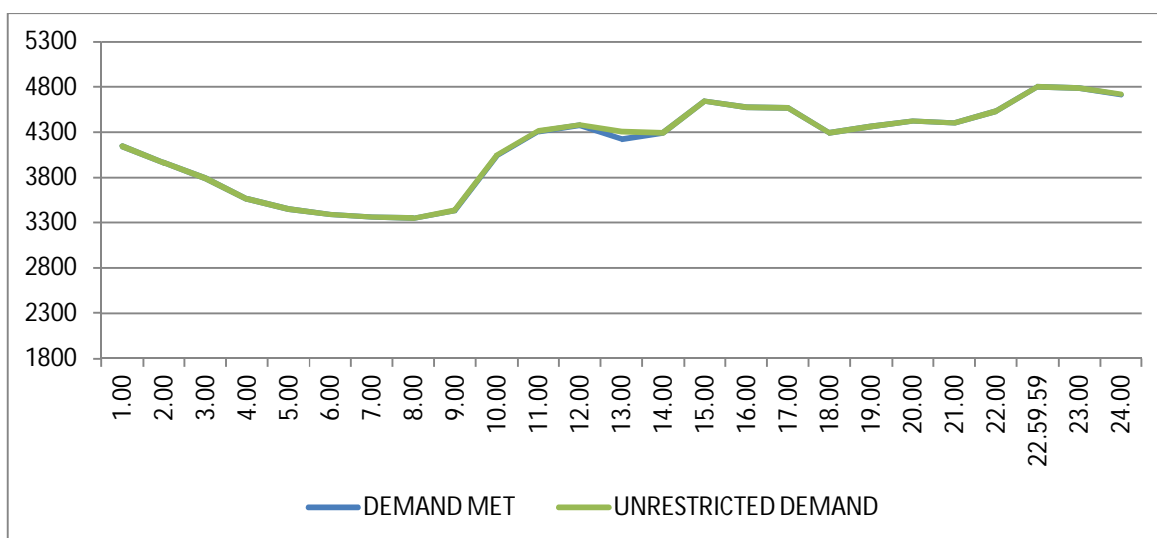
Hrs.	Demand	Load Shedding	Un-Restricted Demand
1.00	4148	0	4148
2.00	3963	0	3963
3.00	3791	0	3791
4.00	3563	0	3563
5.00	3454	0	3454
6.00	3392	0	3392
7.00	3365	0	3365
8.00	3351	0	3351
9.00	3429	7	3436
10.00	4041	7	4048
11.00	4304	7	4311
12.00	4374	7	4381
13.00	4226	81	4307
14.00	4291	0	4291
15.00	4645	0	4645
16.00	4577	0	4577
17.00	4567	0	4567
18.00	4291	0	4291
19.00	4365	0	4365
20.00	4425	0	4425
21.00	4405	0	4405
22.00	4535	0	4535
22.59.59	4803	0	4803
23.00	4788	0	4788
24.00	4710	8	4718
TOTAL	92.644	0.153	92.797



11 LOAD PATTERN OF DELHI ON THE DAY OF MAXIMUM UN-RESTRICTED DEMAND DURING SEPTEMBER 2013 ON 11.09.2013- 4803MW at 22.59.59HRS.

All figures in MW

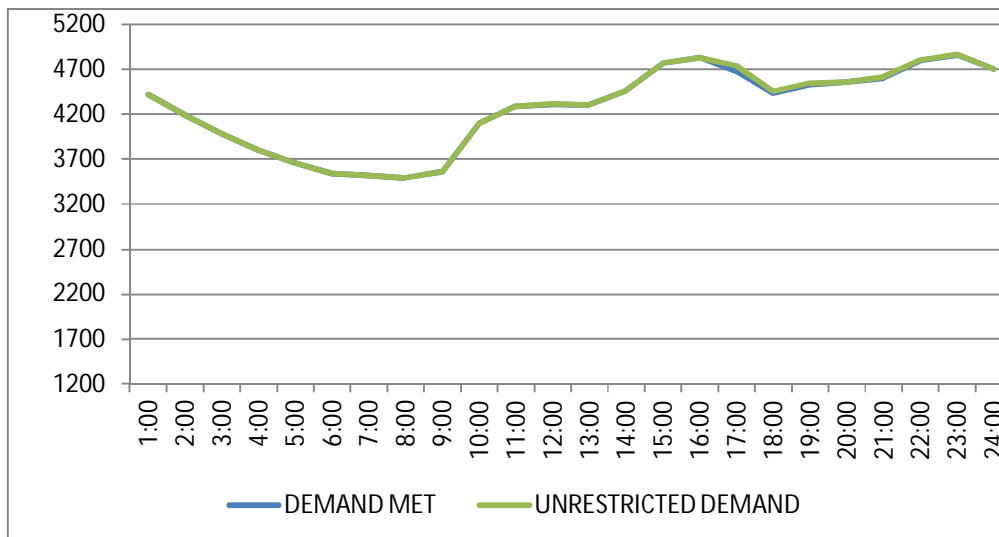
Hrs.	Demand	Load Shedding	Un-Restricted Demand
1.00	4148	0	4148
2.00	3963	0	3963
3.00	3791	0	3791
4.00	3563	0	3563
5.00	3454	0	3454
6.00	3392	0	3392
7.00	3365	0	3365
8.00	3351	0	3351
9.00	3429	7	3436
10.00	4041	7	4048
11.00	4304	7	4311
12.00	4374	7	4381
13.00	4226	81	4307
14.00	4291	0	4291
15.00	4645	0	4645
16.00	4577	0	4577
17.00	4567	0	4567
18.00	4291	0	4291
19.00	4365	0	4365
20.00	4425	0	4425
21.00	4405	0	4405
22.00	4535	0	4535
22.59.59	4803	0	4803
23.00	4788	0	4788
24.00	4710	8	4718
TOTAL	92.644	0.153	92.797



12 LOAD PATTERN OF DELHI ON THE DAY OF MAXIMUM ENERGY CONSUMED DURING SEPTEMBER 2013 – 13.09.2013 – 95.984 Mus

All figures in MW

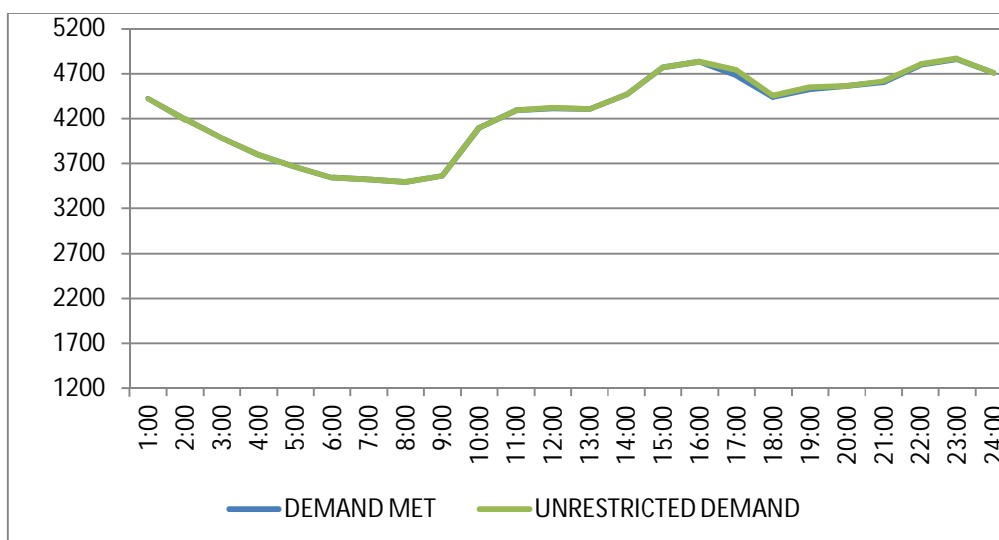
Hrs.	Demand	Load Shedding	Un-Restricted Demand
1:00	4358	0	4358
2:00	4061	0	4061
3:00	3888	0	3888
4:00	3736	0	3736
5:00	3578	0	3578
6:00	3469	0	3469
7:00	3330	63	3393
8:00	3477	0	3477
9:00	3538	0	3538
10:00	3972	0	3972
11:00	4152	0	4152
12:00	4247	18	4265
13:00	4302	86	4388
14:00	4216	0	4216
15:00	4378	2	4380
16:00	4343	0	4343
17:00	4134	10	4144
18:00	4144	0	4144
19:00	4392	0	4392
20:00	4545	0	4545
21:00	4461	0	4461
22:00	4595	0	4595
23:00	4680	0	4680
24:00	4581	0	4581
TOTAL	95.984	0.106	96.090



13 LOAD PATTERN OF DELHI ON THE DAY OF MAXIMUM UNRESTRICTED ENERGY DEMAND DURING SEPTEMBER 2013 – 13.09.2013 – 96.090 Mus

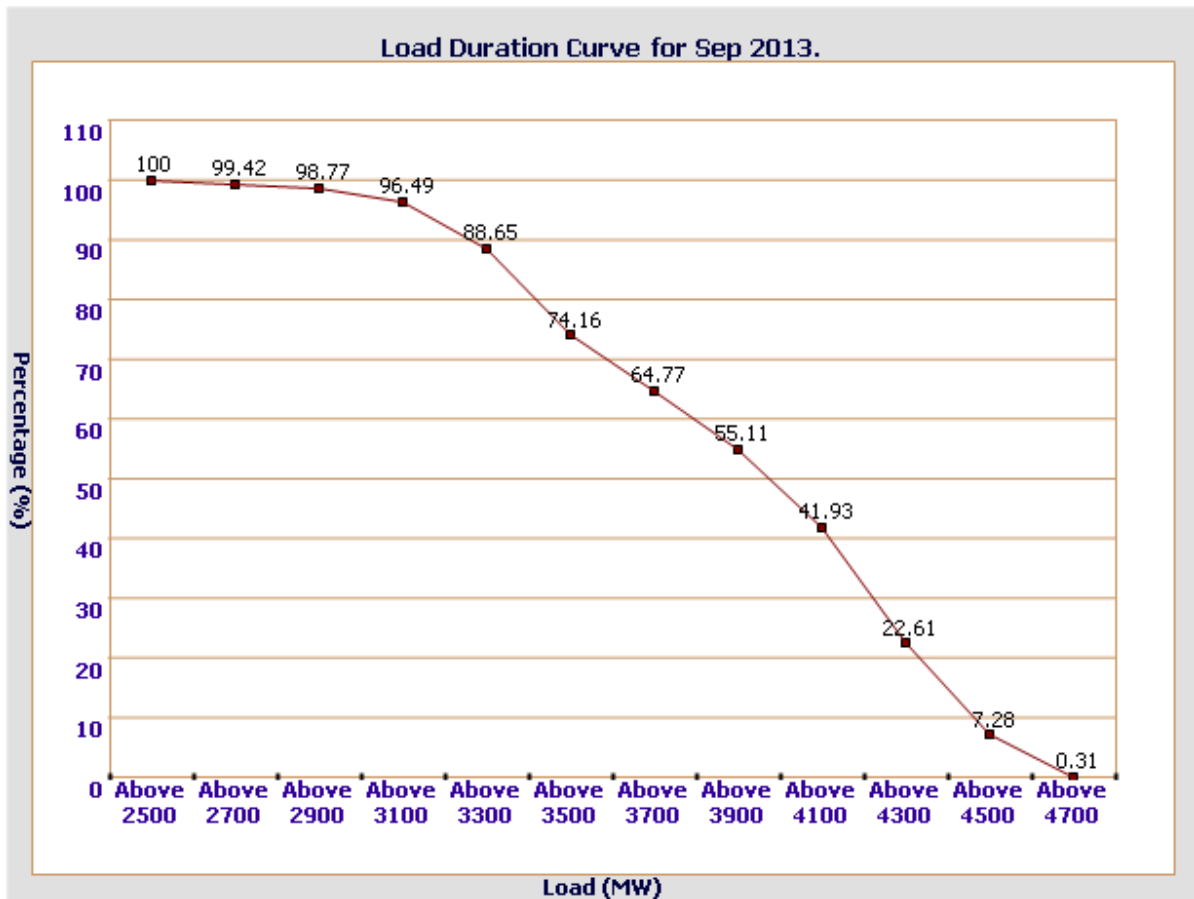
All figures in MW

Hrs.	Demand	Load Shedding	Un-Restricted Demand
1:00	4358	0	4358
2:00	4061	0	4061
3:00	3888	0	3888
4:00	3736	0	3736
5:00	3578	0	3578
6:00	3469	0	3469
7:00	3330	63	3393
8:00	3477	0	3477
9:00	3538	0	3538
10:00	3972	0	3972
11:00	4152	0	4152
12:00	4247	18	4265
13:00	4302	86	4388
14:00	4216	0	4216
15:00	4378	2	4380
16:00	4343	0	4343
17:00	4134	10	4144
18:00	4144	0	4144
19:00	4392	0	4392
20:00	4545	0	4545
21:00	4461	0	4461
22:00	4595	0	4595
23:00	4680	0	4680
24:00	4581	0	4581
TOTAL	95.984	0.106	96.090



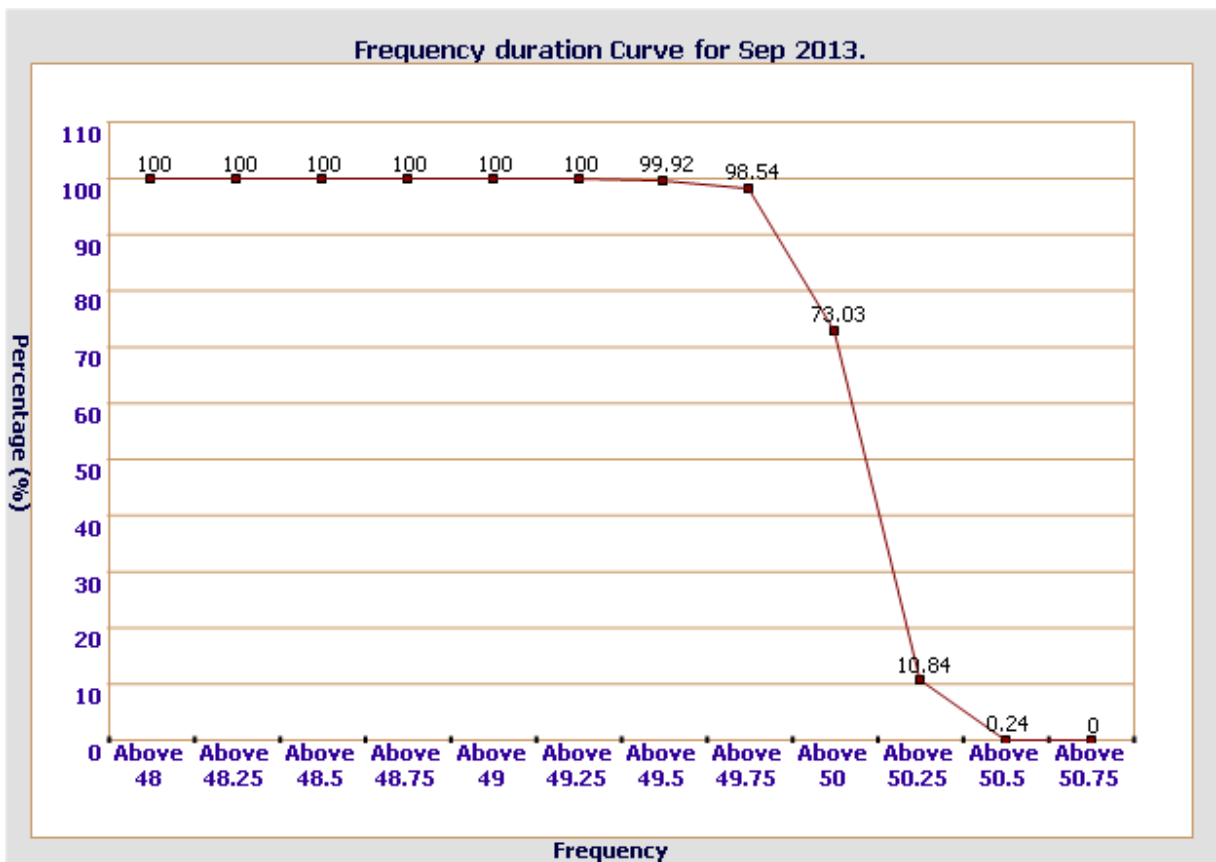
14 LOAD DURATION CURVE FOR SEPTEMBER 2013

Load in MW	Percentage of Time
Above 2500	100 %
Above 2700	99.42 %
Above 2900	98.77 %
Above 3100	96.49 %
Above 3300	88.65 %
Above 3500	74.16 %
Above 3700	64.77 %
Above 3900	55.11 %
Above 4100	41.93 %
Above 4300	22.61 %
Above 4500	7.28 %
Above 4700	0.31 %



FREQUENCY ANALYSIS FOR THE MONTH OF SEPTEMBER 2013

Frequency Range in Hz.	Percentage of time
Above 49.25	100 %
Above 49.5	99.92 %
Above 49.75	98.54 %
Above 50	73.03 %
Above 50.25	10.84 %
Above 50.5	0.24 %
Above 50.75	0 %



16 VOLTAGE PROFILE OF 220 KV SUB-STATIONS IN DELHI DURING SEPTEMBER 2013

All figures in kV

Date	NARELA		GAZIPUR	
	Max	Min	Max	Min
01-Sep-13	226.08	217.96	224.28	211.51
02-Sep-13	226.21	215.38	224.28	209.58
03-Sep-13	224.92	213.70	222.99	209.19
04-Sep-13	224.79	214.99	221.70	205.06
05-Sep-13	224.79	214.48	218.99	206.35
06-Sep-13	226.86	215.38	222.86	205.58
07-Sep-13	225.31	216.54	220.80	210.74
08-Sep-13	225.57	217.18	223.63	213.06
09-Sep-13	223.38	216.02	223.76	213.06
10-Sep-13	225.44	214.35	222.99	210.22
11-Sep-13	224.66	214.06	221.70	208.54
12-Sep-13	225.05	214.48	222.86	209.32
13-Sep-13	225.44	215.25	223.12	211.38
14-Sep-13	224.79	214.48	223.12	206.35
15-Sep-13	226.34	216.28	225.44	213.44
16-Sep-13	228.66	216.54	228.53	216.28
17-Sep-13	225.57	216.41	225.31	212.41
18-Sep-13	225.70	215.64	221.18	211.12
19-Sep-13	224.41	214.48	220.92	213.32
20-Sep-13	225.57	215.77	222.47	214.73
21-Sep-13	225.70	219.25	225.31	217.83
22-Sep-13	228.92	218.35	227.24	214.73
23-Sep-13	226.21	214.99	224.66	211.12
24-Sep-13	228.79	217.99	224.41	209.58
25-Sep-13	227.50	215.38	220.92	211.25
26-Sep-13	226.99	215.38	223.63	212.80
27-Sep-13	225.57	213.70	223.38	212.15
28-Sep-13	225.31	214.35	223.63	211.51
29-Sep-13	226.34	216.41	222.47	213.70
30-Sep-13	224.79	212.54	224.92	208.54

17 VOLTAGE PROFILE OF 400 KV SUB-STATIONS IN DELHI DURING AUGUST 2013
All figures in kV

Date	400kV Bamnauli Grid Sub-Station				
	Max KV	Max Time	Min KV	Min Time	Average KV
01-Sep-13	411.53	03.57.42	394.65	22.34.15	405.27
02-Sep-13	412.23	04.02.03	387.85	14.57.40	399.85
03-Sep-13	408.01	04.02.04	385.74	14.14.58	397.58
04-Sep-13	407.78	04.02.28	387.38	14.32.59	399.35
05-Sep-13	408.48	07.06.57	388.55	14.29.24	400.87
06-Sep-13	413.17	08.02.28	390.43	14.12.00	401.50
07-Sep-13	408.72	05.59.51	391.60	14.25.28	400.99
08-Sep-13	410.36	18.06.42	395.58	23.22.53	401.20
09-Sep-13	408.95	04.02.21	393.94	18.14.01	399.79
10-Sep-13	408.95	03.42.22	390.19	19.07.58	399.91
11-Sep-13	405.67	06.45.53	395.74	13.42.51	397.23
12-Sep-13	407.54	06.06.26	386.67	14.42.50	397.93
13-Sep-13	407.78	05.01.37	390.43	14.22.35	396.33
14-Sep-13	408.72	06.07.38	387.38	14.30.44	397.95
15-Sep-13	413.41	18.04.04	393.47	00.05.20	404.53
16-Sep-13	417.86	04.02.28	395.12	11.19.05	404.72
17-Sep-13	411.30	08.03.56	391.36	14.40.30	402.39
18-Sep-13	408.48	06.18.28	389.02	12.16.51	398.99
19-Sep-13	411.53	07.37.05	387.85	14.31.53	398.99
20-Sep-13	409.89	07.23.02	394.41	00.26.35	402.91
21-Sep-13	413.64	16.09.05	402.15	10.34.34	408.06
22-Sep-13	415.98	04.01.41	398.63	19.11.50	409.24
23-Sep-13	413.87	03.59.33	393.47	19.12.04	404.27
24-Sep-13	417.86	02.33.00	392.30	12.40.12	401.84
25-Sep-13	412.23	07.48.14	393.24	14.46.36	403.82
26-Sep-13	414.34	08.01.13	396.29	11.22.25	404.47
27-Sep-13	413.87	04.00.35	392.77	12.16.02	402.96
28-Sep-13	413.17	06.01.44	393.71	12.16.06	402.57
29-Sep-13	413.64	06.19.48	399.81	19.07.34	407.31
30-Sep-13	414.81	04.00.53	394.88	14.48.51	406.23

All figures in kV

Date	400kV Bawana Grid Sub-Station				
	Max KV	Max Time	Min KV	Min Time	Average KV
01-Sep-13	418.10	03.57.32	405.20	22.32.05	412.81
02-Sep-13	418.33	04.04.54	399.57	14.57.40	408.64
03-Sep-13	414.34	06.49.24	396.99	14.15.08	406.03
04-Sep-13	413.87	04.02.28	396.76	14.33.09	406.53
05-Sep-13	413.41	07.22.28	397.46	13.56.32	407.16
06-Sep-13	417.86	08.02.59	399.10	14.35.22	407.58
07-Sep-13	415.52	18.04.03	400.74	14.25.18	407.61
08-Sep-13	416.22	18.14.41	403.79	00.03.49	408.56
09-Sep-13	411.06	18.05.27	401.92	14.13.52	405.64
10-Sep-13	414.58	08.03.08	398.63	19.07.38	407.18
11-Sep-13	412.23	06.53.13	393.94	13.44.51	403.85
12-Sep-13	413.41	18.01.44	397.46	14.42.10	403.85
13-Sep-13	413.41	06.03.52	399.34	12.51.49	404.29
14-Sep-13	414.58	06.08.38	396.29	14.30.14	404.97
15-Sep-13	417.86	18.00.54	400.51	00.05.40	410.39
16-Sep-13	422.79	04.03.58	402.85	11.06.44	411.58
17-Sep-13	416.69	18.02.28	400.27	14.40.40	407.58
18-Sep-13	415.05	06.21.58	396.29	15.27.03	406.39
19-Sep-13	412.47	17.59.48	396.29	14.37.53	404.53
20-Sep-13	416.22	07.23.22	402.15	00.28.25	410.32
21-Sep-13	421.61	16.07.15	411.06	00.30.51	415.70
22-Sep-13	423.72	06.12.40	407.31	19.13.00	417.59
23-Sep-13	414.34	08.45.51	402.85	12.25.35	409.26
24-Sep-13	422.55	02.33.11	399.81	12.40.22	409.83
25-Sep-13	420.21	07.01.31	401.45	14.45.47	411.35
26-Sep-13	420.91	08.02.03	403.32	12.19.50	411.81
27-Sep-13	419.50	04.02.55	399.81	12.16.12	410.25
28-Sep-13	420.67	06.02.44	400.98	12.38.27	409.97
29-Sep-13	421.38	06.08.37	406.61	19.07.54	413.46
30-Sep-13	419.50	04.00.53	400.51	14.49.01	411.39

18 DETAILS OF LUMPED CAPACITORS AT NEAREST 220 KV SUBSTATION

Sl. No	SUB-STATION	INSTALLED CAPACITY			
		66KV	33KV	11KV	TOTAL
1	IP YARD		30		30
1	Kamla Market			16.35	16.35
2	Minto Road				0
3	GB Pant Hosp			15.88	15.88
4	Delhi Gate			10.9	10.9
5	Tilakmarg			5.04	5.04
7	Cannaught Place			10.08	10.08
8	Kilokri		10.08	10.48	20.56
9	NDSE				0
11	Nizamuddin				0
12	Exhibition-I				0
13	Exhibition-II				0
14	Defence Colony				0
15	IG Stadium		10.08	5.45	15.53
16	Lajpat Nagar				0
17	IP Estate			10.9	10.9
	LT BYPL				5.6
		0	50.16	85.08	140.84
2	Electric Lane				
1	Electric Lane			5.04	5.04
2	Scindia House			5.04	5.04
3	Raisina Road			10.08	10.08
4	Raja Bazar			10.08	10.08
	LT NDMC				12
		0	0	30.24	42.24
3	RPH Station		20		20
1	Lahori Gate			10.49	10.49
2	Jama Masjid			10.48	10.48
4	Kamla Market				0
5	Minto Road			10.9	10.9
6	GB Pant Hosp				0
7	IG Stadium				0
	LT BYPL				3
		0	20	31.87	54.87
4	Parkstreet S/stn	20	20		40
1	Shastri Park		10.896	5.45	16.346
2	Faiz Road			18.05	18.05
3	Motia Khan			16.3	16.3
4	Prasad Nagar			16.25	16.25
5	Anand Parbat			10.8	10.8
6	Shankar Road			5.04	5.04
7	Rama Road			0	0
8	Baird Road			10.08	10.08
9	Hanuman Road			5.04	5.04
10	Pusa			5.44	5.44
11	Ridge Valley			0	0
12	B. D. Marg			0	0
13	Nirman Bhawan			5.04	5.04
	LT BYPL			0	30.1
		20.00	30.90	97.49	178.486
5	Naraina S/stn		20	5.04	25.04
1	DMS			10.85	10.85
2	Mayapuri		10.87	10.4	21.27
3	Inderpuri		10	4.8	14.8
4	Rewari line				0
5	Khyber Lane		10.05		10.05
6	Kirbi Place		10.05		10.05
7	Payal			7.2	7.2
8	Saraswati Garden			10.88	10.88
		0	60.97	49.17	110.14

Sl. No	SUB-STATION	INSTALLED CAPACITY			
		66KV	33kV	11kV	TOTAL
6	Mehrauli S/stn	80		5.04	85.04
1	Adchini			14.61	14.61
2	Andheria Bagh			10.85	10.85
3	IIT			10.9	10.9
4	JNU		10.03	10.03	20.06
5	Bijwasan			15.47	15.47
6	DC Saket			9.98	9.98
7	Malviya Nagar				0
8	C Dot			10.48	10.48
9	Vasant kunj B-Blk	21.79		10.9	32.69
10	Vasant kunj C-Blk	20.16		10.48	30.64
11	Palam				0
12	IGNOU			5.04	5.04
13	R. K. Puram-I			10.07	10.07
14	Vasant Vihar			19.25	19.25
15	Pusp Vihar			10.44	10.44
16	Bhikaji Cama Place		10.08	10.07	20.15
	LT BRPL				25
		121.95	20.11	163.61	330.67
7	Vasantkunj S/stn	40		5.04	45.04
1	R. K. Puram-II			10.08	10.08
2	Vasant kunj C-Blk				0
3	Vasant kunj D-Blk			9.63	9.63
4	Ridge Valley				0
	LT BRPL				33.2
		40	0	24.75	97.95
8	Okhla S/stn	60	10	5.04	75.04
1	Balaji			10.8	10.8
2	East of Kailash			15.89	15.89
3	Alaknanda			16.3	16.3
4	Malviya Nagar	21.79		10.85	32.64
5	Masjid Moth			16.3	16.3
6	Nehru Place			21.34	21.34
7	Okhla Ph-I	21.79		16.3	38.09
8	Okhla Ph-II		20.93	15.47	36.4
9	Shivalik			10.8	10.8
10	Batra			15.9	15.9
11	VSNL			10.9	10.9
12	Siri Fort			10.49	10.49
13	Tuglakabad			10.85	10.85
	LT BRPL				59
		103.58	30.93	187.23	380.74
9	Lodhi Road S/stn		20		20
1	Defence Colony		14.85		14.85
2	Hudco		10.9		10.9
3	Lajpat Nagar		10.9		10.9
4	Nizamuddin		10.44		10.44
5	Vidyut Bhawan				0
6	Ex. Gr. II				0
7	IHC				0
	LT BRPL				42
		0	67.09	0	109.09
10	Sarita Vihar S/stn	20		5.04	25.04
1	Sarita Vihar			10.07	10.07
2	MCIE			10.06	10.06
3	Mathura Road	20.16		11.69	31.85
4	Jamia Millia			10.89	10.89
5	Sarai Julena		10.08	16.29	26.37
6	Jasola			5.44	5.44
	LT BRPL				23.6
		40.16	10.08	69.48	143.32

Sl. No	SUB-STATION	INSTALLED CAPACITY			
		66KV	33kV	11kV	TOTAL
11	Wazirabad				
1	Bhagirathi		14.4	10.9	25.3
2	Ghonda	21.79	22.56	15.94	60.29
3	Seelam Pur		10.08	21.39	31.47
4	Dwarkapuri			15.46	15.46
5	Nandnagri	20.16		16.35	36.51
6	Yamuna Vihar			16.2	16.2
7	East of Loni Road			10.8	10.8
8	Shastri Park			10.9	10.9
9	Karawal Nagar			5.4	5.4
10	Sonia Vihar			7.2	7.2
	LT BYPL				10
		41.95	47.04	130.54	229.53
12	Geeta Colony				
1	Geeta Colony				0
2	Kanti Nagar			10.49	10.49
3	Kailash Nagar			10.9	10.9
4	Seelam Pur			15.48	15.48
5	Shakar Pur				0
	LT BYPL				5.8
		0	0	36.87	42.67
13	Gazipur S/stn	40		5.04	45.04
1	Dallupura	28.8		10.9	39.7
2	Vivek Vihar			9.57	9.57
3	GT Road			10.85	10.85
4	Kondli	20.16		10.85	31.01
5	MVR-I			10.9	10.9
6	MVR-II	20.16		10.9	31.06
7	PPG Ind. Area			10.06	10.06
	LT BYPL				20.6
		109.12	0	79.07	208.79
14	Patparganj S/stn	40	20	5.04	65.04
1	GH-I	19.89		10.45	30.34
2	GH-II	20.09		10.9	30.99
3	CBD		10.03	15.48	25.51
4	Guru Angad Nagar			15.49	15.49
5	Karkadooma		10.8	10.44	21.24
6	Preet Vihar			10.07	10.07
7	CBD-II			10.8	10.8
8	Shakarpur			10.8	10.8
9	Jhilmil			10.8	10.8
10	Dilshad Garden	20.16		16.35	36.51
11	Khichripur	21.79		10.49	32.28
12	Mother Dairy				0
13	Scope Building				0
14	Vivek Vihar				0
15	Akhardham			14.6	14.6
	LT BYPL				23.3
		121.93	40.83	151.71	337.77
15	Najafgarh S/stn	60		5.04	65.04
1	A4 Paschim Vihar			10.8	10.8
2	Nangloi	21.73		15.84	37.57
3	Nangloi W/W	20.89		10.85	31.74
4	Pankha Road			15.88	15.88
5	Jaffarpur			15.43	15.43
7	Inst. Area Janakpuri			17.6	17.6
8	Paschimpuri		10.05	15.47	25.52
9	Paschim Vihar	41.83		15.43	57.26
10	Mukherjee Park			20.83	20.83
11	Udyog Nagar			10.43	10.43
12	Choukhandi			10.07	10.07
	LT BRPL				27
		144.45	10.05	163.67	345.17

Sl. No	SUB-STATION	INSTALLED CAPACITY			
		66KV	33kV	11kV	TOTAL
16	Pappankalan-I S/stn	20		5.04	25.04
1	Bindapur Grid G-3 PPK	21.73		15.85	37.58
2	Bodella-I	20.1		16.24	36.34
3	Bodella-II	21.73		17.64	39.37
4	DC Janakpuri			10.03	10.03
5	G-2 PPK			10.8	10.8
6	G-5 PPK			15.51	15.51
7	G-6 PPK			5.4	5.4
8	G-15 PPK			10.8	10.8
9	Harinagar	21.18		16.25	37.43
10	Rewari line			5.44	5.44
	LT BRPL				13.5
		104.74	0	129	247.24
17	BBMB Rohtak Road				
1	S.B. Mill			10.07	10.07
2	Rama Road			10.88	10.88
3	Ram Pura			10.48	10.48
4	Rohtak Road			8.04	8.04
5	Vishal			10.4	10.4
6	Tri Nagar			5.44	5.44
7	Madipur			10.43	10.43
8	Sudershan Park			10.08	10.08
9	Kirti Nagar			5.44	5.44
		0	0	81.26	81.26
18	Shalimarbagh S/stn		40	6	46
1	S.G.T. Nagar			5.44	5.44
2	Wazirpur-1			17.18	17.18
3	Wazirpur-2			11.39	11.39
4	Ashok Vihar			5.44	5.44
5	Rani Bagh			10.88	10.88
6	Haiderpur			11.39	11.39
7	SMB FC			5.44	5.44
8	SMB KHOSLA			5.44	5.44
	LT TPDDL				30
		0	40	78.6	148.6
19	Subzimandi S/stn			6	6
1	Shakti Nagar			5.94	5.94
2	Gulabibagh			10.88	10.88
3	Shahzadabagh			13.68	13.68
4	DU			5.44	5.44
5	Tripolia			10.88	10.88
	B. G. Road			5.4	5.4
	LT BYPL				0.9
	LT TPDDL				20
		0	0	58.22	79.12
20	Narela S/stn	40		5.04	45.04
1	A-7 Narela			10.88	10.88
2	AlR Kham pur			6	6
3	Ashok vihar			10.48	10.48
4	Azad Pur			5.44	5.44
5	Tri Nagar			5.44	5.44
6	Badli	20		5.95	25.95
7	DSIDC Narela-1			5.95	5.95
8	GTK			5.44	5.44
9	Jahangirpuri	20	10	0	30
10	Bhalswa			3.6	3.6
	LT TPDDL				10
		80	10	64.22	164.22

Sl. No	SUB-STATION	INSTALLED CAPACITY			
		66KV	33kV	11kV	TOTAL
21	Gopalpur S/stn		30	5.04	35.04
1	Azad Pur			10.88	10.88
2	Hudson Lane			5.44	5.44
3	Wazirabad			2.4	2.4
4	Indra Vihar			5.44	5.44
6	GTK Road			5.94	5.94
7	Jahangirpuri		10	5.95	15.95
8	Civil lines			5.44	5.44
9	Pitam Pura-1			5.44	5.44
10	Pitam Pura-3			5.44	5.44
11	Air Khampur			5.95	5.95
12	SGT Nagar			5.95	5.95
13	Tiggipur			10.88	10.88
	LT TPDDL				29
		0	40	80.19	149.19
22	Rohini S/stn	40		6	46
1	Rohini Sec-22			10.88	10.88
2	Rohini Sec-23	20		5.44	25.44
3	Rohini Sec-24			5.44	5.44
4	Rohini-1			5.44	5.44
5	Rohini-3			5.95	5.95
6	Rohini-4			11.39	11.39
7	Rohini-5			11.39	11.39
8	Rohini-6			5.95	5.95
9	Mangolpuri-1			16.83	16.83
10	Mangolpuri-2	20		5.94	25.94
11	Pitam Pura-1	20		5.04	25.04
12	Pitam Pura-2			10.48	10.48
13	Rohini DC-1			14.4	14.4
	LT TPDDL				30
		100	0	120.57	250.57
23	Kanjhawala S/stn	20		5.04	25.04
1	Bawana Clear Water			10.88	10.88
2	Pooth Khoord			5.44	5.44
		20	0	21.36	41.36
24	BAWANA S/stn				
1	Bawana S/stn No. 6			10.88	10.88
2	Bawana S/stn No. 7				0
		0	0	10.88	10.88
25	Kashmeregate S/stn			5.04	5.04
1	Civil lines			5.44	5.44
2	Town Hall			8.64	8.64
3	Fountain			5.45	5.45
	LT BYPL				2.7
		0	0	24.57	27.27
26	Pappankalan-II				
1	DMRC-I				0
2	DMRC-II				0
27	Trauma Center (AIIMS)				
1	AIIMS		13.26	5.04	18.3
2	Trauma Center			10.08	10.08
3	Netaji Nagar			15.12	15.12
4	Sanjay Camp			10.08	10.08
5	Kidwai Nagar			5.04	5.04
6	SJ Airport			5.04	5.04
	Race Course			5.04	5.04
		0	13.26	55.44	68.7

Sl. No	SUB-STATION	INSTALLED CAPACITY			
		66KV	33kV	11kV	TOTAL
28	MUNDKA				
	Rohini-2			11.39	11.39
	LT BRPL				18.5
		0	0	11.39	29.89
29	DSIDC BAWANA				
	DSIDC NRL-1	20			20
	DSIDC NRL-2			10.88	10.88
		20	0	10.88	30.88
30	RIDGE VALLEY				
	Keventry Diary			10.08	10.08
	Nehru Park			5.04	5.04
	Bapu Dham			10.08	10.08
		0	0	25.2	25.2
31	IP EXTN (PRAGATI)				
	Vidyut Bhawan			10.08	10.08
	Dalhousie Road			5.04	5.04
	School Lane			5.04	5.04
	LT NDMC				12.29
		0	0	20.16	32.45
	TOTAL CAPACITY	1067.9	491.4	2092.7	4139

Utility	HT	LT	Total
BYPL	864	102	966
TPDDL	657	119	776
NDMC	180	24	204
DTL	754	0	754
BRPL	1158	242	1400
RPH	20	0	20
MES	20	0	20
TOTAL	3652	487	4139

20 DETAILS OF BREAK-DOWNS DURING THE MONTH OF SEPTEMBER 2013

SL NO	OCCURRENCE OF BREAK-DOWN		DETAILS OF THE BREAKDOWN	TIME OF RESTORATION		REMARKS
	DATE	TIME		DATE	TIME	
1	01.09.13	9:56	220kV BAWANA-DSIIDC BAWANA CKT-I	01.09.13	16:51	AT BAWANA CKT MADE OFF AS SMOKE REPORTED NEAR B-PH PT OF CKT AND B-PH BUS ISOLATOR DAMAGED.
2	01.09.13	11:30	220kV BAWANA-DSIIDC BAWANA CKT-II	01.09.13	12:09	AT BAWANA CKT TRIPPED ON D/P, C-PH, Z-1. NO TRIPPING AT DSIDC BAWANA.
3	01.09.13	12:07	220kV NARELA - MANDOLA CKT-II	01.09.13	19:45	AT NARELA CKT TRIPPED ON D/P, Z-1, DIST-8.409 KM, 186. AT MANDOLA CKT TRIPPED ON D/P, Z-2, B-PH, 186 A&B.
4	02.09.13	8:34	220kV WAZIRABAD - KASHMIRGATE CKT-I	02.09.13	8:49	AT WZB CKT TRIPPED ON D/P, Z-1, B-PH. NO TRIPPING AT KASHMIRGATE.
5	02.09.13	13:01	400kV Ballabgarh-Bamnauli Ckt-I	02.09.13	20:13	AT BAMNAULI CKT TRIPPED ON D/P, Z-3,186 A&B, 130E. AT BALLABGARH CKT TRIPPED ON DIRECT TRIP.
6	02.09.13	20:30	PATPARGANJ 220/33kV 100MVA Tx-I	02.09.13	22:23	TX TRIPPED ON 86.
7	03.09.13	13:43	220kV MAHARANI BAGH - PRAGATI CKT	03.09.13	14:02	AT MAHARANI BAGH CKT TRIPPED ON D/P, Z-1, AY&B-PH. AT PRAGATI CKT TRIPPED ON D/P, Z-1, AB&C-PH, 186.
8	03.09.13	17:56	400kV Mandola-Bawana Ckt-II	03.09.13	18:33	AT BAWANA CKT TRIPPED WITHOUT INDICATION. NO TRIPPING AT MANDOLA.
9	04.09.13	2:48	220kV PRAGATI - SARITA VIHAR CKT	04.09.13	3:00	AT SARITA VIHAR CKT TRIPPED ON D/P, Z-1, DIST-5.332 KM, A/R, 186A&B. AT PRAGATI CKT TRIPPED ON D/P, Z-1, DIST-4.423 KM, 186A&B.
10	04.09.13	3:44	220kV MAHARANI BAGH - SARITA VIHAR CKT	04.09.13	4:15	AT MAHARANIBAGH CKT TRIPPED ON D/P, DIST-1.9 KM. NO TRIPPING AT SARITA VIHAR.
11	04.09.13	4:19	220kV MAHARANI BAGH - SARITA VIHAR CKT	04.09.13	8:50	AT MAHARANIBAGH CKT TRIPPED ON D/P, DIST-2 KM, E/F. NO TRIPPING AT SARITA VIHAR.
12	04.09.13	10:45	220kV WAZIRABAD-GEETA COLONY CKT-I	04.09.13	16:47	AT WZB CKT TRIPPED ON F/E. NO TRIPPING AT GEETA COLONY. R-PH JUMPER SNAPPED OUT SIDE GEETA COLONY GRID.
13	04.09.13	11:25	220kV PRAGATI - I.P.CKT - I	04.09.13	17:35	AT IP CKT TRIPPED ON O/C, B-PH, DIRECTIONAL E/F, 86. B-PH LINE ISOLATOR DAMAGED AT IP END
14	04.09.13	11:25	INDRAPRASTHA POWER 220/33kV 100MVA Tx-II	04.09.13	12:15	33KV I/C-2 TRIPPED ON B-PH, O/C.
15	04.09.13	11:25	INDRAPRASTHA POWER 220/33kV 100MVA Tx-III	04.09.13	12:25	TX TRIPPED ON E/F, 86, BACK UP PROTECTION.
16	04.09.13	19:00	220kV GOPALPUR- MANDOLACKT-I	04.09.13	19:38	SPS OPERATED AT MANDOLA.
17	05.09.13	5:10	OKHLA 220/33kV 50MVA Tx-I	05.09.13	6:35	TX TRIPPED ON 84 RLV, 95C, 87 DIFFERENTIAL PROTECTION, 86. 33KV I/C-1 TRIPPED ON 95, 86.
18	05.09.13	20:51	220kV MAHARANI BAGH - LODHI ROAD CKT-I	06.09.13	10:25	AT MAHARANI BAGH CKT TRIPPED ON D/P, DIST-2.3 KM. NO TRIPPING AT LODHI ROAD. R-PH JUMPER SNAPPED BETWEEN TOWER NO-10 & 11.
19	06.09.13	10:40	INDRAPRASTHA POWER 33kV KILOKRI CKT (BAY-25)	06.09.13	11:30	33KV BAY NO-12 & 36 OF TIE CB BETWEEN 33KV EAST AND WEST BUS TRIPPED ON O/C, B-PH RESULTED IN SUPPLY FAILURE OF 33KV BUS.
20	06.09.13	10:40	INDRAPRASTHA POWER 33kV IG STADIUM CKT-I (BAY-29)	06.09.13	11:15	33KV BAY NO-12 & 36 OF TIE CB BETWEEN 33KV EAST AND WEST BUS TRIPPED ON O/C, B-PH RESULTED IN SUPPLY FAILURE OF 33KV BUS.
21	06.09.13	10:40	INDRAPRASTHA POWER 33kV IG STADIUM CKT-II (BAY-33)	06.09.13	11:15	33KV BAY NO-12 & 36 OF TIE CB BETWEEN 33KV EAST AND WEST BUS TRIPPED ON O/C, B-PH RESULTED IN SUPPLY FAILURE OF 33KV BUS.
22	06.09.13	10:40	INDRAPRASTHA POWER 33kV NIZAMUDDIN CKT (BAY-13)	06.09.13	11:30	33KV BAY NO-12 & 36 OF TIE CB BETWEEN 33KV EAST AND WEST BUS TRIPPED ON O/C, B-PH RESULTED IN SUPPLY FAILURE OF 33KV BUS.
23	06.09.13	10:40	INDRAPRASTHA POWER 33kV KILOKRI CKT (BAY-37)	06.09.13	11:30	33KV BAY NO-12 & 36 OF TIE CB BETWEEN 33KV EAST AND WEST BUS TRIPPED ON O/C, B-PH RESULTED IN SUPPLY FAILURE OF 33KV BUS.
24	06.09.13	12:01	BAWANA 400/220kV 315MVA ICT-VI	10.09.13	18:00	ICT TRIPPED ON 426 PRV ALARM, DC FAIL, 86 A&B. MARSHALING BOX OF ICT DAMAGED IN FIRE. 220KV I/C-6 TRIPPED ON INTER TRIPPING.
25	06.09.13	14:20	220kV DIAL- MEHRAULI CKT-I	06.09.13	23:06	AT MEHRAULI CKT TRIPPED ON D/P, Z-1, A-PH, DIST-6.261 KM. AT DIAL CKT TRIPPED ON D/P, Z-1, R-PH, GENERAL TRIP, DIST-4.35 KM. PROBLEM IN R-PH CB CONTACT AT DIAL.
26	07.09.13	13:48	220kV OKHLA - BTPS CKT. - II	07.09.13	14:36	AT BTPS CKT TRIPPED ON D/P, DIST-2.0 KM. NO TRIPPING AT OKHLA.
27	07.09.13	13:48	220kV MEHRAULI - BTPS CKT. - II	07.09.13	14:40	AT BTPS CKT TRIPPED ON E/F, D/P, DIST-5.61 KM. NO TRIPPING AT MEHRAULI.
28	08.09.13	15:25	220kV WAZIRABAD - MANDOLA CKT-I	08.09.13	17:04	AT WZB CKT TRIPPED ON D/P, Z-1, R&Y-PH, DIST-1.4 KM. AT MANDOLA CKT TRIPPED ON D/P, R&Y-PH, DIST-12.15 KM.
29	08.09.13	16:09	220kV WAZIRABAD - MANDOLA CKT-II	08.09.13	18:16	AT WZB CKT TRIPPED ON D/P, Z-1&2, RY&B-PH, DIST-9.0 KM. AT MANDOLA CKT TRIPPED ON D/P, Z-2, DIST-15.34 KM.
30	08.09.13	19:37	LODHI RD 33kV LAJPAT NAGAR CKT-I	08.09.13	22:55	CKT TRIPPED WITHOUT INDICATION AT LODHI ROAD. S/D ALONG WITH 33KV BUS-1 AVAILED TO ATTEND B-PH BUS ISOLATOR.
31	09.09.13	13:47	OKHLA 220/33kV 100MVA Tx-IV	09.09.13	14:15	TR TRIPPED ON BUCHHOLZ,86.

SL NO	OCCURRENCE OF BREAK-DOWN		DETAILS OF THE BREAKDOWN	TIME OF RESTORATION		REMARKS
	DATE	TIME		DATE	TIME	
32	09.09.13	22:52	LODHI RD 33/11kV, 16MVA Tx-IV	10.09.13	0:08	TX TRIPPED ON OLTC,86
33	11.09.13	15:58	LODHI RD 33kV IHC CKT-I	11.09.13	21:20	CKT TRIPPED ON E/F. S/D TAKEN TO ATTEND LINE PT AS CAT CLIMB ON LINE PT AND ELECTROCUTED.
34	12.09.13	3:42	DSIIDC Bawana 220/66kV 100MVA Tx-III	12.09.13	4:21	TX TRIPPED ON 96, LBB PROTECTION ALONG WITH 66KV I/C-3 WHICH TRIPPED ON 86.
35	12.09.13	3:42	DSIIDC Bawana 220/66kV 100MVA Tx-II	12.09.13	4:21	TX TRIPPED ON 96, LBB PROTECTION ALONG WITH 66KV I/C-2 WHICH TRIPPED ON 86.
36	12.09.13	4:20	SARITA VIHAR 66/11kV, 20MVA Tx-II	12.09.13	10:30	11KV I/C-2 TRIPPED ON E/F.
37	12.09.13	7:00	400kV Bawana-Mundka Ckt-I	12.09.13	9:09	AT BAWANA CKT TRIPPED ON AUTO TRIP, CB DC-2 FAULTY, 85 LO (CARRIER LOCK OUT), 295 A1C AT CB NO-1552, 195 B2C AT CB NO 1652 AND 186 A&B.
38	12.09.13	14:51	WAZIRABAD 220/66kV 100MVA Tx-II	12.09.13	16:57	TX TRIPPED ON SPR AND 66KV I/C-2 TRIPPED ON INTER TRIPPING
39	12.09.13	18:36	WAZIRABAD 220/66kV 100MVA Tx-II	12.09.13	22:14	TX TRIPPED ON SPR AND 66KV I/C-2 TRIPPED WITHOUT INDICATION.
40	14.09.13	12:58	220 KV PATPARGANJ - I.P. CKT-I	14.09.13	19:10	AT IP CKT TRIPPED ON D/P, Z-2, AB&C-PH, 186. NO TRIPPING AT PATPARGANJ. AT IP B-PH PT CLAMP AND B-PH STRAND OF COMMON JUMPER CONDUCTOR DAMAGED.
41	14.09.13	12:58	220kV GEETA COLONY- PATPARGANJ CKT-I	14.09.13	13:06	AT GEETA COLONY CKT TRIPPED ON D/P, Z-1, DIST-3.301 KM. NO TRIPPING AT PATPARGANJ.
42	14.09.13	16:09	220kV MEHRAULI - VASANT KUNJ CKT.-I	14.09.13	17:05	AT MEHRAULI CKT TRIPPED ON 67AX, A/R. NO TRIPPING AT VASANT KUNJ.
43	14.09.13	16:09	VASANT KUNJ 66kV VASANT KUNJ C-I CKT	15.09.13	20:55	AT VASANT KUNJ CKT TRIPPED ON 87P AND 186. Y-PH POLE OF CB, R-PH CT AND R-PH LINE ISOLATOR INSULATOR DAMAGED.
44	15.09.13	12:16	SARITA VIHAR 66/11kV, 20MVA Tx-II	15.09.13	12:20	11KV I/C-2 TRIPPED ON E/F.
45	15.09.13	15:35	220kV BAMNAULI-PAPPANKALAN-II CKT-II	15.09.13	15:45	AT PPK-2 CKT TRIPPED ON D/P, Z-1, 207A. NO TRIPPING AT BAMNAULI END.
46	15.09.13	16:38	220kV BAMNAULI-PAPPANKALAN-II CKT-I	15.09.13	18:15	AT PPK-2 CKT TRIPPED ON 207 RELAY INDICATOIN. NO TRIPPING AT BAMNAULI.
47	16.09.13	2:44	OKHLA 220/33kV 100MVA Tx-IV	16.09.13	3:00	33KV I/C-3 TRIPPED ON E/F, 86.
48	16.09.13	2:44	OKHLA 220/33kV 100MVA Tx-III	16.09.13	3:00	33KV I/C-3 TRIPPED ON 86, 51N LV SIDE.
49	16.09.13	8:40	DSIIDC Bawana 220/66kV 100MVA Tx-III	16.09.13	8:56	TX TRIPPED ON 86 AND 66KV I/C-2 TRIPPED ON E/F, LBB, 86.
50	16.09.13	8:40	DSIIDC Bawana 220/66kV 100MVA Tx-II	16.09.13	11:12	TX TRIPPED ON 86 AND 66KV I/C-2 TRIPPED ON LBB PROTECTION.
51	17.09.13	1:10	GAZIPUR 220/66kV 100MVA Tx-II	17.09.13	1:55	66KV I/C-1 TRIPPED ON O/C,86. Y-PH CT OF BUS COUPLER DAMAGED.
52	17.09.13	1:10	GAZIPUR 220/66kV 100MVA Tx-I	17.09.13	1:55	66KV I/C-1 TRIPPED ON O/C,86. Y-PH CT OF BUS COUPLER DAMAGED.
53	17.09.13	15:55	OKHLA 220/33kV 50MVA Tx-I	17.09.13	16:40	33KV I/C-1 TRIPPED ON O/C,RY&B-PH,95,86.
54	17.09.13	15:55	OKHLA 33kV ALAKNANDA CKT-I	18.09.13	13:35	CKT TRIPPED ON O/C,E/F,186. Y&B-PH JUMPER OF 33KV ALAKNANDA CKT-1 TOWARDS BUS SIDE MELTED.
55	17.09.13	15:55	OKHLA 220/33kV 100MVA Tx-IV	17.09.13	18:55	33KV I/C-1 TRIPPED ON O/C,86. Y&B-PH JUMPER OF 33KV ALAKNANDA CKT-1 TOWARDS BUS SIDE MELTED.
56	17.09.13	15:55	OKHLA 220/33kV 100MVA Tx-III	17.09.13	18:55	33KV I/C-3 TRIPPED ON O/C,51A,86.
57	18.09.13	15:28	SHALIMAR BAGH 220/33kV 100MVA Tx-III	18.09.13	15:38	TX TRIPPED ON O/C,E/F,86. 33KV I/C-3 TRIPPED ON R-PH O/C, E/F,86.
58	18.09.13	15:28	SHALIMAR BAGH 220/33kV 100MVA Tx-II	18.09.13	15:37	33KV I/C-2 TRIPPED ON R-PH O/C,86.
59	19.09.13	9:40	220KV BAWANA -NAJAFGARH CKT	19.09.13	9:50	AT NJF CKT TRIPPED ON 86. NO TRIPPING AT BAWANA.
60	19.09.13	9:40	220kV KANJHAWALA-NAJAFGARH CKT	19.09.13	9:50	AT NJF CKT TRIPPED ON 86. NO TRIPPING AT KANJHAWALA.
61	19.09.13	13:00	ROHINI 220/66kV 100MVA Tx-I	19.09.13	13:17	TX TRIPPED ON 195 ABC, 295 ABC.
62	20.09.13	9:15	ROHINI-II 220/66kV 160MVA Tx-I	20.09.13	20:18	TX TRIPPED ON LOW GAS PRESSURE AND 86 A&B. 66KV I/C-1 TRIPPED ON 86.
63	20.09.13	11:30	GOPALPUR 220/33kV 100MVA Tx-III	20.09.13	11:47	33KV I/C-3 TRIPPED ON O/C, B-PH.
64	20.09.13	11:30	GOPALPUR 33kV 10MVAR CAP. BANK-II	28.09.13	19:09	CAP BANK TRIPPED ON 64RT, O/C, RY&B-PH
65	20.09.13	12:10	220KV BAWANA -NAJAFGARH CKT	20.09.13	12:15	AT NJF CKT TRIPPED ON D/P, Z-2, 186. NO TRIPPING AT BAWANA.
66	20.09.13	12:11	220KVBAWANA- ROHINI CKT-II	20.09.13	17:50	AT BAWANA CKT TRIPPED ON D/P, A&B-PH, 86. NO TRIPPING AT ROHINI. Y-PH JUMPER SNAPPED AT TOWER NO-1.
67	21.09.13	1:37	400kV Bawana-Mundka Ckt-II	21.09.13	2:25	AT MUNDKA CKT TRIPPED ON D/P,Z-1,B-PH,A/R,186. AT BAWANA CKT TRIPPED ON D/P,Z-1,C-PH.

SL NO	OCCURRENCE OF BREAK-DOWN		DETAILS OF THE BREAKDOWN	TIME OF RESTORATION		REMARKS
	DATE	TIME		DATE	TIME	
68	21.09.13	13:34	220kV MEHRAULI - VASANT KUNJ CKT.-I	21.09.13	15:15	AT MEHRAULI CKT TRIPPED ON D/P,A-PH,186A&B. NO TRIPPING AT VASANT KUNJ.
69	21.09.13	15:55	VASANT KUNJ 220/66kV 100MVA Tx-II	21.09.13	22:25	TX TRIPPED ON HIGH OIL TEMPERATURE AND 66KV I/C-2 TRIPPED ON 86.
70	21.09.13	21:47	DSIIDC Bawana 220/66kV 100MVA Tx-II	21.09.13	22:23	TX AND 66KV I/C-2 TRIPPED ON 86.
71	22.09.13	6:13	400kV Bamnauli-Jhatikara Ckt-I	22.09.13	7:07	AT BAMNAULI CKT TRIPPED ON D/P, C-N, Z-1, 186T, 186A&B.
72	22.09.13	15:54	DSIIDC Bawana 220/66kV 100MVA Tx-II	22.09.13	21:52	TX TRIPPED ON DIFFERENTIAL PROTECTION
73	23.09.13	9:05	INDRAPRASTHA POWER 220/33kV 100MVA Tx-III	23.09.13	13:18	TX TRIPPED ON NON DIRECTIONAL O/C, E/F, 86. SNAKE ELECTROCUTED IN IN YARD.
74	24.09.13	17:20	400kV Mundka-Jhatikara Ckt-I	24.09.13	17:42	CKT TRIPPED ON D60 (LINE DISTANCE PROTECTION) 86A&B. NO TRIPPING AT OTHER END.
75	24.09.13	18:02	ROHINI 66kV ROHINI IV CKT-II	25.09.13	18:38	CKT TRIPPED ON D/P,Z-1,Y&B-PH,67AX,67NX,186. R-PH POLE OF CB DAMAGED.
76	24.09.13	18:02	ROHINI 220/66kV 100MVA Tx-II	24.09.13	18:25	66KV I/C-1 TRIPPED ON 51A, 51C AND 86.
77	24.09.13	18:02	ROHINI 220/66kV 100MVA Tx-I	24.09.13	18:25	66KV I/C-1 TRIPPED ON 51A, 51C AND 86.
78	25.09.13	15:55	OKHLA 220/33kV 100MVA Tx-III	25.09.13	17:58	TX TRIPPED ON DIFFERENTIAL,86.
79	26.09.13	10:00	OKHLA 33kV MASJID MOTH CKT	26.09.13	13:50	CKT TRIPPED ON D/P,Z-2,RY&B-PH. Y-PH COMMON JUMPER BUS ISOLATOR BURNT.
80	27.09.13	17:25	PAPPANKALAN-II 220/66kV 100MVA Tx-I	28.09.13	13:45	TX TRIPPED ON 86T,OSR-T,86X AND AUTO RECLOSE.
81	27.09.13	18:28	KASHMIRI GATE 33/11kV, 20MVA Tx	27.09.13	19:45	TX TRIPPED ON 87 (DIFFERENTIAL PROTECTION),R&B-PH,86. MONKEY ELECTROCUTED IN YARD.
82	27.09.13	18:47	LODHI RD 33/11kV, 16MVA Tx-iv	27.09.13	19:50	TX TRIPPED ON OLTC TRIP.
83	29.09.13	12:09	INDRAPRASTHA POWER 220/33kV 100MVA Tx-I	29.09.13	13:05	33KV I/C-1 TRIPPED ON 86.
84	29.09.13	12:09	INDRAPRASTHA POWER 220/33kV 100MVA Tx-II	29.09.13	13:08	33KV I/C-2 TRIPPED ON E/F.
85	29.09.13	13:45	NARAINA 220/33kV 100MVA Tx-III	30.09.13	15:42	TX TRIPPED ON 87 DIFFERENTIAL AND 33KV I/C-3 TRIPPED ON INTER TRIPPING.

DETAILS OF UNDER FREQUENCY RELAY OPERATIONS IN DELHI POWER SYSTEM DURING THE MONTH OF SEPTEMBER 2013

DATE	S. N.	TIME		Name of Grid	NAME OF AFFECTED FEEDERS	MODE	LOAD RELIEF IN MW
		OUT	IN				
01.09.13	1	12:52	13:30	GOPALPUR	11kV FEEDERS	MALFUNCTIONING	2
02.09.13	2	14:43	14:51	SHALIMAR BAGH	33kV ASHOK VIHAR CKT.	NORMAL MODE	10
03.09.13	3	22:22	22:28	KHANJAWALA	11kV FEEDERS	NORMAL MODE	5
04.09.13	4	2:50	2:54	GEETA COLONY	33kV KAILASH NAGAR CKT. -II	MALFUNCTIONING	9
	5	11:27	11:29	KASHMIRI GATE	33kV JAMA MASJID CKT.	MALFUNCTIONING	10
	6	11:23	11:29	LODHI ROAD	66kV VIDYUT BHAWAN 11kV FEEDERS	MALFUNCTIONING	5
05.09.13	7	9:26	9:32	KHANJAWALA	11kV FEEDERS	MALFUNCTIONING	1
06.09.13	8	22:36	22:42	NAJAFGARH	66kV BODELA CKT. I & II	DF/DT MODE	88
	8	14:21	14:24	GOPALPUR	11kV FEEDERS	DF/DT MODE	7
	9	22:31	22:40	KHANJAWALA	11kV FEEDERS	DF/DT MODE	2
	10	22:32	22:33	GOPALPUR	11kV FEEDERS	DF/DT MODE	10
07.09.13	11	17:12	17:16	SHALIMAR BAGH	33kV SMB KHOSLA O/H CKT.	MALFUNCTIONING	45
08.09.13	12	19:38	19:39	GOPALPUR	11kV FEEDERS	MALFUNCTIONING	8
09.09.13	13	11:14	11:15	KHANJAWALA	11kV FEEDERS	DF/DT MODE	1
	14	11:14	11:17	SHALIMAR BAGH	33kV SMB KHOSLA O/H CKT. 33kV WAZIRPUR -II CKT. -I	DF/DT MODE	36
	15	11:14	11:17	NARAINA	11kV FEEDERS	DF/DT MODE	3
	16	11:14	11:16	GOPALPUR	11kV FEEDERS	DF/DT MODE	7
	17	11:14	11:17	GEETA COLONY	33kV KAILASH NAGAR CKT. -II	DF/DT MODE	14
10.09.13	18	13:15	13:25	KHANJAWALA	11kV FEEDERS	NORMAL MDOE	3
11.09.13	19	11:12	11:14	KHANJAWALA	11kV FEEDERS	MALFUNCTIONING	3
	20	11:12	11:17	SHALIMAR BAGH	33kV WAZIRPUR -II CKT. -I	MALFUNCTIONING	20
	21	20:33	20:36	KHANJAWALA	11kV FEEDERS	MALFUNCTIONING	4

DATE	S. N.	TIME		Name of Grid	NAME OF AFFECTED FEEDERS	MODE	LOAD RELIEF IN MW
		OUT	IN				
12.09.13	22	12:18	12:22	GEETA COLONY	33kV KAILASH NAGAR CKT. -II	DF/DT MODE	35
	23	18:38	18:43	GEETA COLONY	33kV KAILASH NAGAR CKT. -II	DF/DT MODE	42
	24	12:18	12:23	LODHI ROAD	66kV VIDYUT BHAWAN 11kV FEEDERS	DF/DT MODE	6
	25	12:18	12:23	NAJAFGARH	11kV FEEDERS	DF/DT MODE	10
	26	13:58	14:02	LODHI ROAD	11kV FEEDERS	DF/DT MODE	3
	27	14:33	14:35	NAJAFGARH	11kV FEEDERS	DF/DT MODE	11
	28	12:19	12:22	SHALIMAR BAGH	33kV WAZIRPUR CKT. -I & II	DF/DT MODE	40
	29	11:28	11:31	KHANJAWALA	11kV FEEDERS	DF/DT MODE	2
	30	12:20	12:35	KHANJAWALA	11kV FEEDERS	DF/DT MODE	1
	31	12:18	12:21	GOPALPUR	11kV FEEDERS	DF/DT MODE	4
	32	12:18	12:21	NARAINA	11kV FEEDERS	DF/DT MODE	4
	33	7:24	7:42	SHALIMAR BAGH	33kV SMB KHOSLA O/H CKT.	DF/DT MODE	0
22.09.13	34	7:20	7:21	SHALIMAR BAGH	33kV AZADPUR CKT, G.T.K.CKT.	MALFUNCTIONING	15